



Catalog Number GTX100526 **Package:** 25 µl, 100 µl Proclin

Product Name Kallikrein 2 antibody [N3C3]

Full Name kallikrein-related peptidase 2

Synonyms KLK2A2 antibody, MGC12201 antibody, hK2 antibody, KLK2 antibody, tissue kallikrein-2 antibody, "kallikrein 2, prostatic antibody", glandular kallikrein 2 antibody, glandular kallikrein-1 antibody, kallikrein-2 antibody, kallikrein-related peptidase 2 antibody

Product Description Rabbit Polyclonal antibody to Kallikrein 2 (kallikrein-related peptidase 2)

Background Glandular kallikreins cleave Met-Lys and Arg-Ser bonds in kininogen to release Lys-bradykinin.

Host Rabbit

Clonality Polyclonal

Isotype IgG

Immunogen Recombinant protein encompassing a sequence within the center region of human Kallikrein 2. The exact sequence is proprietary.

Antigen Species Human

Species Reactivity Human

Applications IHC-P, WB

Application Note	Suggested dilution	Protocol	Reference
IHC (Formalin-fixed paraffin-embedded sections)	1:100-1:1000*		
Western blot	1:500-1:3000*		

Not tested in other applications.

*Optimal dilutions/concentrations should be determined by the researcher.

Positive Controls Molt-4

Predicted Target Size 29 kDa

Conjugation Unconjugated

Form Supplied Liquid

Purification Purified by antigen-affinity chromatography.

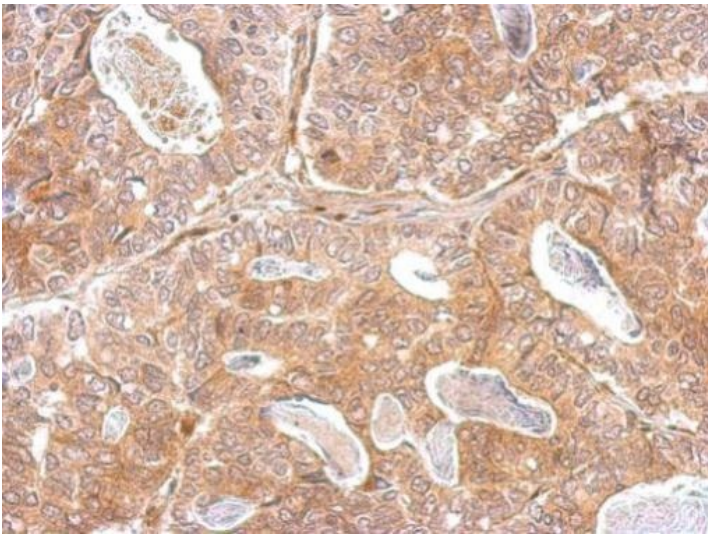
Concentration 1 mg/ml

Storage Buffer 1XPBS, 20% Glycerol (pH7). 0.025% ProClin 300 was added as a preservative.

Storage Instruction Keep as concentrated solution. Aliquot and store at -20°C or below. Avoid multiple freeze-thaw cycles.

Notes For *In vitro* laboratory use only. Not for any clinical, therapeutic, or diagnostic use in humans or animals. Not for animal or human consumption.

ResearchArea [Cancer](#) > [Type of cancer](#) > [Breast](#) > [Other](#)
[Cancer](#) > [Type of cancer](#) > [Prostate cancer](#)
[Disease Related](#) > [Cardiovascular](#) > [Heart](#) > [Heart disease](#)

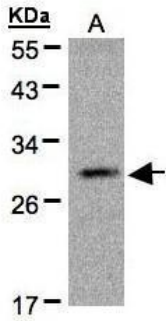


GTX100526 IHC-P Image

Kallikrein 2 antibody [N3C3] detects KLK2 protein at cytosol on human gastric cancer by immunohistochemical analysis.

Sample: Paraffin-embedded gastric cancer.

Kallikrein 2 antibody [N3C3] (GTX100526) dilution: 1:500.



GTX100526 WB Image

Sample(30 µg of whole cell lysate)

A: MOLT4(GTX27912)

12% SDS PAGE

GTX100526 diluted at 1:500