



## Rabbit antibody to GFR alpha-2 (376-390): whole serum

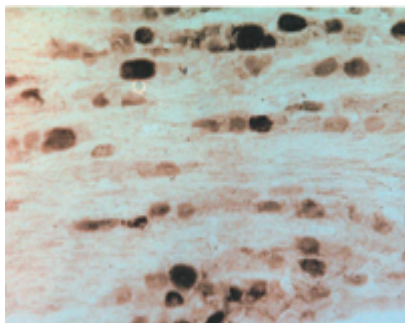
<b>Catalogue No.:</b>	R-067-100
<b>Description:</b>	FUNCTION: Receptor for neurturin. Mediates the NRTN-induced autophosphorylation and activation of the RET receptor. Also able to mediate GDNF signaling through the RET tyrosine kinase receptor. SUBCELLULAR LOCATION: Cell membrane; lipid-anchor; GPI-anchor (By similarity). ALTERNATIVE PRODUCTS: 2 named isoforms produced by alternative splicing.
<b>Batch No.:</b>	See product label
<b>Unit size:</b>	100 µl
<b>Antigen:</b>	A synthetic peptide (PRVEKTPSLPDDLSD) as a part of human GFR alpha-2 protein (aa: 376-390) conjugated to KLH.
<b>Sequence:</b>	PRVEKTPSLPDDLSD
<b>Antigen Location:</b>	376-390
<b>Other Names:</b>	GDNF family receptor alpha-2; GFR-alpha-2; Neurturin receptor alpha; NTNR-alpha; NRTNR-alpha; TGF-beta-related neurotrophic factor receptor 2; GDNF receptor beta; GDNFR-beta; RET ligand 2
<b>Accession:</b>	GFRA2_HUMAN
<b>Produced in:</b>	Rabbit
<b>Purity:</b>	Whole serum
<b>Applications:</b>	IHC, WB. A dilution of 1:500 to 1:1000 is recommended for both applications. This antibody stains beautifully the large neurons in the rat DRG. This antibody also is ideal for WB analysis of rat DRG and brain homogenate. The optimal dilution should be determined by the end user, but a dilution of 1 in 500 is recommended for initial testing. Biosensis recommends optimal dilutions/concentrations should be determined by the end user.
<b>Specificity:</b>	Western blot analysis indicates a high level of specificity to GFR alpha-2 for this antiserum.
<b>Cross-reactivity:</b>	This antibody is known to react with rat GFR alpha-2 and from IHC analysis, there appears to be no cross-reactivity with other members of the GFR family.
<b>Form:</b>	Lyophilised
<b>Reconstitution:</b>	Reconstitute in 100 µl of sterile water. Centrifuge to remove any insoluble material.
<b>Storage:</b>	After reconstitution keep aliquots at -20°C for a higher stability, and at 4°C with an appropriate antibacterial agent. Glycerol (1:1) may be added for an additional stability. Avoid repetitive freeze/thaw cycles.
<b>References:</b>	Rossi et al. (1999) Neuron. 22(2): 243 Klein et al. (1997) Nature. 387(6634): 717

---

FOR RESEARCH USE ONLY



## Rabbit antibody to GFR alpha-2 (376-390): whole serum



Immunohistochemical staining of rat dorsal root ganglia using Rabbit antibody to GFR alpha-2 (376-390): whole serum, catalogue no. R-067-100.

biosensis

---

FOR RESEARCH USE ONLY