

**bs-4007R-Cy5**

[Conjugated Primary Antibody]

**Bioss**  
ANTIBODIES

www.biossusa.com  
support@biossusa.com  
800.501.7654 [DOMESTIC]  
+1.781.569.5821 [INTERNATIONAL]

## Rabbit Anti-ATG16L Polyclonal Antibody, Cy5 Conjugated

— D A T A S H E E T —

**Host:** Rabbit

**Target Protein:** ATG16L

**Immunogen** 530-580/607

**Range:**

**Clonality:** Polyclonal

**Isotype:** IgG

**Entrez Gene:** [55054](#)

**Swiss Prot:** [Q676U5](#)

**Source:** KLH conjugated synthetic peptide derived from human ATG16A

**Purification:** Purified by Protein A.

**Storage:** Aqueous buffered solution containing 100ug/ml BSA, 50% glycerol and 0.09% sodium azide. Store at 4°C for 12 months.

**Background:** Plays an essential role in autophagy: interacts with ATG12-ATG5 to mediate the conjugation of phosphatidylethanolamine (PE) to LC3 (MAP1LC3A, MAP1LC3B or MAP1LC3C), to produce a membrane-bound activated form of LC3 named LC3-II. Thereby, controls the elongation of the nascent autophagosomal membrane.

**Conjugation:** Cy5

**Excitation/ Emission:** 625,650nm/670nm

**Size:** 100ul

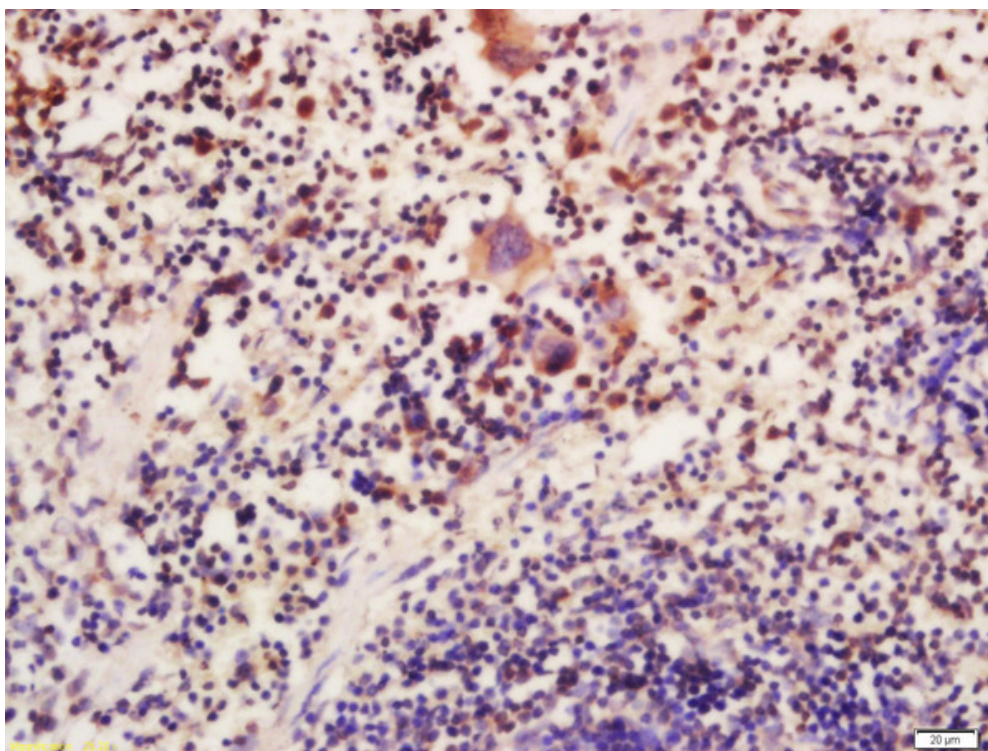
**Concentration:** 1ug/ul

**Applications:** IF(IHC-P)(1:50-200)

**Cross Reactive Species:** Human  
Mouse  
Rat

Caution: For research use only. Not for human or animal therapeutic or diagnostic use.

— V A L I D A T I O N —  
I M A G E S



Formalin-fixed and paraffin embedded mouse spleen labeled with Anti-ATG16L Polyclonal Antibody, Unconjugated (bs-4007R) at 1:200 followed by conjugation to the secondary antibody and DAB staining