

bs-4007R-Cy5.5

[Conjugated Primary Antibody]

Bioss
ANTIBODIES

www.biossusa.com
support@biossusa.com
800.501.7654 [DOMESTIC]
+1.781.569.5821 [INTERNATIONAL]

Rabbit Anti-ATG16L Polyclonal Antibody, Cy5.5 Conjugated

— D A T A S H E E T —

Host: Rabbit

Target Protein: ATG16L

Immunogen 530-580/607

Range:

Clonality: Polyclonal

Isotype: IgG

Entrez Gene: [55054](#)

Swiss Prot: [Q676U5](#)

Source: KLH conjugated synthetic peptide derived from human ATG16A

Purification: Purified by Protein A.

Storage: Aqueous buffered solution containing 100ug/ml BSA, 50% glycerol and 0.09% sodium azide. Store at 4°C for 12 months.

Background: Plays an essential role in autophagy: interacts with ATG12-ATG5 to mediate the conjugation of phosphatidylethanolamine (PE) to LC3 (MAP1LC3A, MAP1LC3B or MAP1LC3C), to produce a membrane-bound activated form of LC3 named LC3-II. Thereby, controls the elongation of the nascent autophagosomal membrane.

Conjugation: Cy5.5

Excitation/ Emission: 675nm/694nm

Size: 100ul

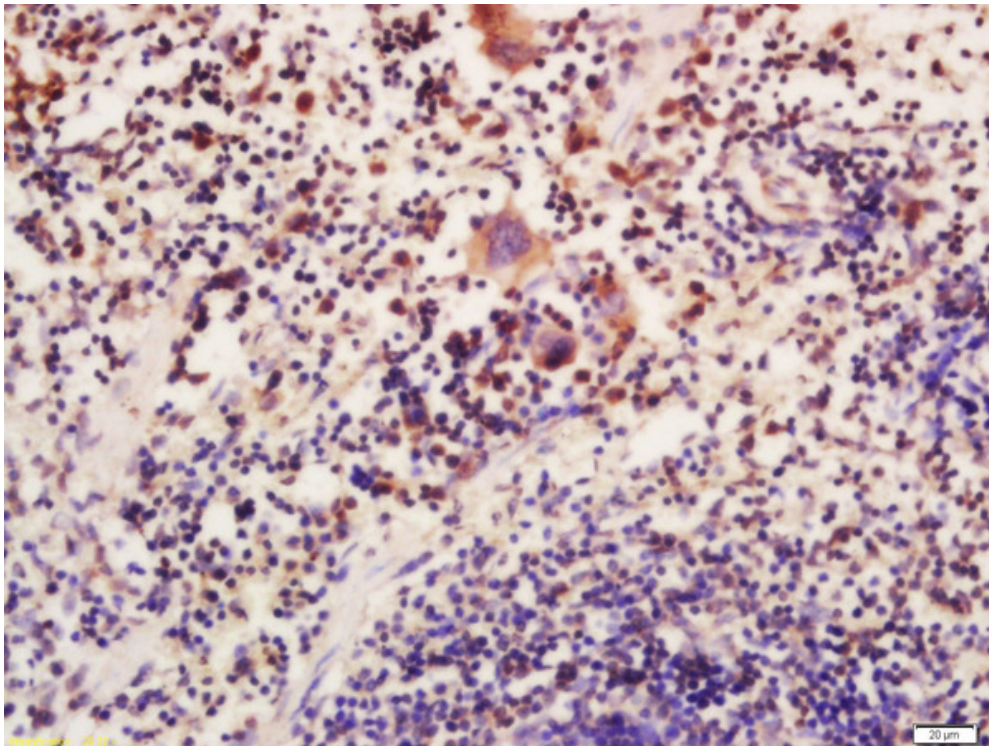
Concentration: 1ug/ul

Applications: IF(IHC-P)(1:50-200)

Cross Reactive Species: Human
Mouse
Rat

Caution: For research use only. Not for human or animal therapeutic or diagnostic use.

— V A L I D A T I O N —
I M A G E S



Formalin-fixed and paraffin embedded mouse spleen labeled with Anti-ATG16L Polyclonal Antibody, Unconjugated (bs-4007R) at 1:200 followed by conjugation to the secondary antibody and DAB staining