

PHLPP IHC Antibody

Rabbit Polyclonal

Antigen Affinity Purified

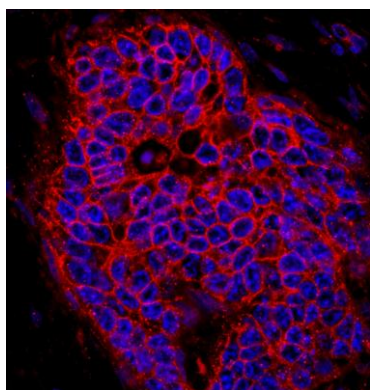
Catalog No. IHC-00382

Protein ID NP_919431.1

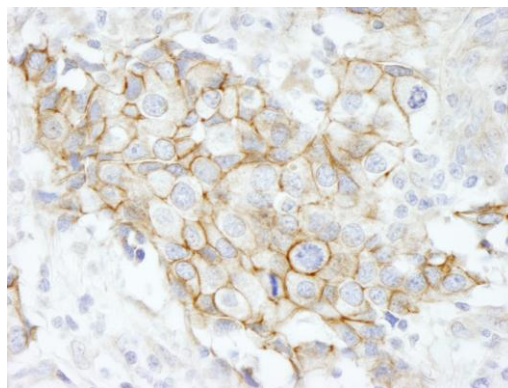
Gene ID 23239



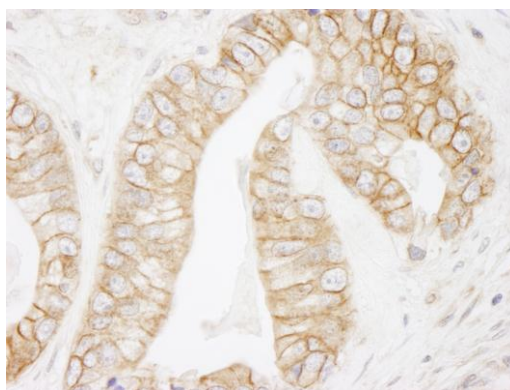
APPLICATIONS	IHC-P, IF
REACTIVITY TESTED	Human. Other species have not been tested.
ISOTYPE	IgG
AMOUNT	0.1 ml
STORAGE/SHELF LIFE	2 - 8° C / 1 year from date of receipt
PHYSICAL STATE	Liquid
BUFFER	Tris-buffered Saline containing 0.1% BSA containing 0.09% Sodium Azide
ORIGIN	USA
PRODUCTION PROCEDURES	<p>Antibody was affinity purified using an epitope specific to PHLPP immobilized on solid support.</p> <p>The epitope recognized by IHC-00382 maps to a region between residue 1150 and the C-terminus (residue 1205) of human PH Domain and Leucine Rich Repeat Protein Phosphatase using the numbering given in entry NP_919431.1 (GeneID 23239).</p> <p>Antibody concentration was determined by extinction coefficient: absorbance at 280 nm of 1.4 equals 1.0 mg of IgG.</p>
APPLICATIONS	<p>Centrifuge tube to remove product from lid. Optimal working dilutions should be determined experimentally by the investigator. Prepare working dilution immediately before use.</p> <p>Immunohistochemistry 1:100 - 1:500</p> <p>Immunofluorescence 1:50 - 1:500</p>
APPLICATION NOTES	<p>Epitope exposure is recommended.</p> <p>Epitope exposure with citrate buffer will enhance staining.</p> <p>Likely to work with frozen sections.</p> <p>In some cases, the antibody may be diluted further than indicated.</p>
IHC HUMAN CONTROLS	Anaplastic Thyroid Carcinoma, Breast Carcinoma, Ovarian Carcinoma, Prostate Carcinoma



Detection of Human PHLPP by Immunohistochemistry.
Sample: FFPE section of human breast carcinoma. *Antibody:* Affinity purified rabbit anti-PHLPP (Cat. No. IHC-00382) used at a dilution of 1:100. *Detection:* Red-fluorescent goat anti-rabbit IgG highly cross-adsorbed Antibody Hilyte Plus™ 555 (A120-501E) used at a dilution of 1:100.



Detection of Human PHLPP by Immunohistochemistry.
Sample: FFPE section of human breast carcinoma. *Antibody:* Affinity purified rabbit anti-PHLPP (Cat. No. IHC-00382) used at a dilution of 1:250. *Detection:* DAB staining using Immunohistochemistry Accessory Kit (Cat. No. IHC-101).



Detection of Human PHLPP by Immunohistochemistry.
Sample: FFPE section of human prostate carcinoma. *Antibody:* Affinity purified rabbit anti-PHLPP (Cat. No. IHC-00382) used at a dilution of 1:250. *Detection:* DAB staining using Immunohistochemistry Accessory Kit (Cat. No. IHC-101).

MATERIAL SAFETY DATA SHEET

CONTENTS This product contains Rabbit immunoglobulin G (IgG) protein in Tris-buffered Saline containing 0.1% BSA containing 0.09% Sodium Azide.

INGREDIENT DESCRIPTIONS **NON-HAZARDOUS:**

Bovine Serum Albumin (BSA) – This product was derived from animals free of infectious or contagious diseases of U.S. Origin. No known toxicity for this biological material.

HAZARDOUS:

Sodium Azide (NaN3): Azide forms explosive chemical compounds with lead and copper plumbing. Care must be taken to wash waste down drains with large volumes of water. LD50 oral mouse 27 mg/kg. Wash all affected areas with large volumes of water and if swallowed consult your physician immediately.