

# Gamma-Taxilin Antibody AbVantage™ Pack

Produced in Rabbit

Antigen Affinity Purified

Catalog No. A311-455A

Protein ID NP\_060830.2

Gene ID 55787



**CONTENTS**  
Rabbit anti-Gamma-Taxilin A304-041A  
Rabbit anti-Gamma-Taxilin A304-042A  
Rabbit anti-Gamma-Taxilin A304-043A

**APPLICATIONS** WB, IP

**REACTIVITY** Human, Mouse

**STORAGE / SHELF LIFE** 2 - 8° C / 1 year from date of receipt

**PHYSICAL STATE** Liquid

**ORIGIN** USA

**NOTE** Centrifuge tube to remove product from lid. Optimal working dilutions should be determined experimentally by the investigator. Prepare working dilution immediately before use.

# Gamma-Taxilin Antibody

Rabbit Polyclonal

Antigen Affinity Purified

Catalog No. A304-041A

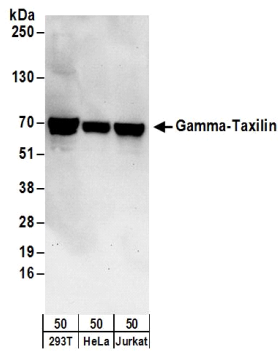
Protein ID NP\_060830.2

Gene ID 55787

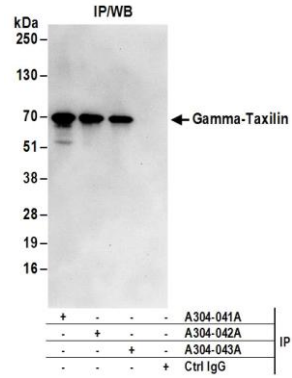


<b>APPLICATIONS</b>	WB, IP
<b>REACTIVITY TESTED</b>	Human.
<b>PRESUMED REACTIVITY</b>	Based on 100% sequence identity, this antibody is predicted to react with Orangutan, Rhesus Monkey, Gorilla, Chimpanzee, White-tufted-ear marmoset, Crab-eating macaque and Small-eared galago.
<b>AMOUNT</b>	0.1 ml at 1 mg/ml
<b>STORAGE/SHELF LIFE</b>	2 - 8° C / 1 year from date of receipt
<b>PHYSICAL STATE</b>	Liquid
<b>BUFFER</b>	Tris-citrate/phosphate buffer, pH 7 to 8 containing 0.09% Sodium Azide
<b>ORIGIN</b>	USA
<b>PRODUCTION PROCEDURES</b>	Antibody was affinity purified using an epitope specific to Gamma-Taxilin immobilized on solid support.  The epitope recognized by A304-041A maps to a region between residue 25 to 50 of human Taxilin Gamma using the numbering given in entry NP_060830.2 (GeneID 55787).  Antibody concentration was determined by extinction coefficient: absorbance at 280 nm of 1.4 equals 1.0 mg of IgG.
<b>APPLICATIONS</b>	Centrifuge tube to remove product from lid. Optimal working dilutions should be determined experimentally by the investigator. Prepare working dilution immediately before use.  Western Blot                      1:5,000 to 1:25,000 Immunoprecipitation            2 to 10 mcg/mg lysate
<b>APPLICATION NOTES</b>	Validation by IP/Western Blot was performed using ReliaBLOT® Western Blot Gel 4-8%, 10 x 10 cm (Cat. No. WB101-40812G) and ReliaBLOT® Reagents (Cat. No. WB120). Related products include ReliaBLOT® IP/WB kits, buffers and reagents.
<b>ADDITIONAL INFO</b>	<a href="http://www.bethyl.com/product/A304-041A">http://www.bethyl.com/product/A304-041A</a>  Use the link above to view a current list of citations and other product specific information.

# Gamma-Taxilin Antibody: A304-041A



**Detection of Human Gamma-Taxilin by Western Blot.**  
*Samples:* Whole cell lysate (50 µg) from 293T, HeLa, and Jurkat cells. *Antibodies:* Affinity purified rabbit anti-Gamma-Taxilin antibody A304-041A (lot A304-041A-1) used for WB at 0.04 µg/ml. *Detection:* Chemiluminescence with an exposure time of 30 seconds.



**Detection of Human Gamma-Taxilin by Western Blot of Immunoprecipitates.**  
*Samples:* Whole cell lysate (1 mg for IP; 20% of IP loaded) from 293T cells. *Antibodies:* Affinity purified rabbit anti-Gamma-Taxilin antibody A304-041A (lot A304-041A-1) used for IP at 6 µg/mg lysate. Gamma-Taxilin was also immunoprecipitated by rabbit anti-Gamma-Taxilin antibodies A304-042A and A304-043A. For blotting immunoprecipitated Gamma-Taxilin, A304-041A was used at 1 µg/ml. *Detection:* Chemiluminescence with an exposure time of 30 seconds.

## MATERIAL SAFETY DATA SHEET

### CONTENTS

This product contains Rabbit immunoglobulin G (IgG) protein in Tris-citrate/phosphate buffer, pH 7 to 8 containing 0.09% Sodium Azide.

### INGREDIENT DESCRIPTIONS

#### HAZARDOUS:

Sodium Azide (NaN<sub>3</sub>): Azide forms explosive chemical compounds with lead and copper plumbing. Care must be taken to wash waste down drains with large volumes of water. LD50 oral mouse 27 mg/kg. Wash all affected areas with large volumes of water and if swallowed consult your physician immediately.

# Gamma-Taxilin Antibody

Rabbit Polyclonal

Antigen Affinity Purified

Catalog No. A304-042A

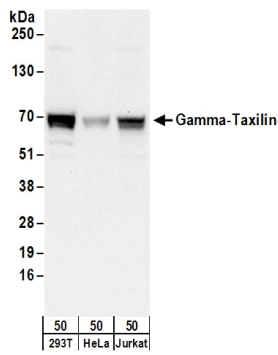
Protein ID NP\_060830.2

Gene ID 55787

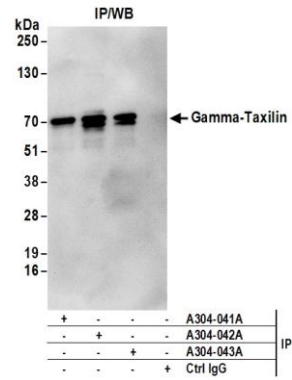


<b>APPLICATIONS</b>	WB, IP				
<b>REACTIVITY TESTED</b>	Human.				
<b>PRESUMED REACTIVITY</b>	Based on 100% sequence identity, this antibody is predicted to react with Orangutan, Gorilla, Chimpanzee, White-tufted-ear marmoset and Northern white-cheeked gibbon.				
<b>AMOUNT</b>	0.1 ml at 1 mg/ml				
<b>STORAGE/SHELF LIFE</b>	2 - 8° C / 1 year from date of receipt				
<b>PHYSICAL STATE</b>	Liquid				
<b>BUFFER</b>	Tris-citrate/phosphate buffer, pH 7 to 8 containing 0.09% Sodium Azide				
<b>ORIGIN</b>	USA				
<b>PRODUCTION PROCEDURES</b>	<p>Antibody was affinity purified using an epitope specific to Gamma-Taxilin immobilized on solid support.</p> <p>The epitope recognized by A304-042A maps to a region between residue 475 to 525 of human Taxilin Gamma using the numbering given in entry NP_060830.2 (GeneID 55787).</p> <p>The epitopes for anti-ABT1 antibodies A304-044A and A304-045A are in close proximity, but do not overlap.</p> <p>Antibody concentration was determined by extinction coefficient: absorbance at 280 nm of 1.4 equals 1.0 mg of IgG.</p>				
<b>APPLICATIONS</b>	<p>Centrifuge tube to remove product from lid. Optimal working dilutions should be determined experimentally by the investigator. Prepare working dilution immediately before use.</p> <table><tr><td>Western Blot</td><td>1:2,000 to 1:10,000</td></tr><tr><td>Immunoprecipitation</td><td>2 to 10 mcg/mg lysate</td></tr></table>	Western Blot	1:2,000 to 1:10,000	Immunoprecipitation	2 to 10 mcg/mg lysate
Western Blot	1:2,000 to 1:10,000				
Immunoprecipitation	2 to 10 mcg/mg lysate				
<b>APPLICATION NOTES</b>	Validation by IP/Western Blot was performed using ReliaBLOT® Western Blot Gel 4-8%, 10 x 10 cm (Cat. No. WB101-40812G) and ReliaBLOT® Reagents (Cat. No. WB120). Related products include ReliaBLOT® IP/WB kits, buffers and reagents.				
<b>ADDITIONAL INFO</b>	<p><a href="http://www.bethyl.com/product/A304-042A">http://www.bethyl.com/product/A304-042A</a></p> <p>Use the link above to view a current list of citations and other product specific information.</p>				

# Gamma-Taxilin Antibody: A304-042A



**Detection of Human Gamma-Taxilin by Western Blot.**  
*Samples:* Whole cell lysate (50 µg) from 293T, HeLa, and Jurkat cells. *Antibodies:* Affinity purified rabbit anti-Gamma-Taxilin antibody A304-042A (lot A304-042A-1) used for WB at 0.1 µg/ml. *Detection:* Chemiluminescence with an exposure time of 10 seconds.



**Detection of Human Gamma-Taxilin by Western Blot of Immunoprecipitates.**  
*Samples:* Whole cell lysate (1 mg for IP; 20% of IP loaded) from 293T cells. *Antibodies:* Affinity purified rabbit anti-Gamma-Taxilin antibody A304-042A (lot A304-042A-1) used for IP at 6 µg/mg lysate. Gamma-Taxilin was also immunoprecipitated by rabbit anti-Gamma-Taxilin antibodies A304-041A and A304-043A. For blotting immunoprecipitated Gamma-Taxilin, A304-042A was used at 1 µg/ml. *Detection:* Chemiluminescence with an exposure time of 10 seconds.

## MATERIAL SAFETY DATA SHEET

### CONTENTS

This product contains Rabbit immunoglobulin G (IgG) protein in Tris-citrate/phosphate buffer, pH 7 to 8 containing 0.09% Sodium Azide.

### INGREDIENT DESCRIPTIONS

#### HAZARDOUS:

Sodium Azide (NaN<sub>3</sub>): Azide forms explosive chemical compounds with lead and copper plumbing. Care must be taken to wash waste down drains with large volumes of water. LD50 oral mouse 27 mg/kg. Wash all affected areas with large volumes of water and if swallowed consult your physician immediately.

# Gamma-Taxilin Antibody

Rabbit Polyclonal

Antigen Affinity Purified

Catalog No. A304-043A

Protein ID NP\_060830.2

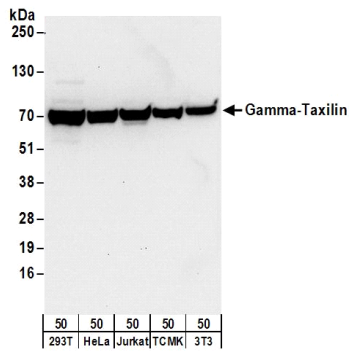
Gene ID 55787



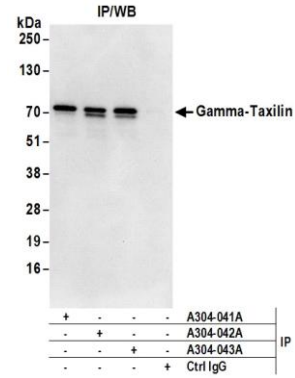
<b>APPLICATIONS</b>	WB, IP				
<b>REACTIVITY TESTED</b>	Human, mouse.				
<b>PRESUMED REACTIVITY</b>	Based on 100% sequence identity, this antibody is predicted to react with Orangutan, Rhesus Monkey, Gorilla, Chimpanzee, White-tufted-ear marmoset and Crab-eating macaque.				
<b>AMOUNT</b>	0.1 ml at 1 mg/ml				
<b>STORAGE/SHELF LIFE</b>	2 - 8° C / 1 year from date of receipt				
<b>PHYSICAL STATE</b>	Liquid				
<b>BUFFER</b>	Tris-citrate/phosphate buffer, pH 7 to 8 containing 0.09% Sodium Azide				
<b>ORIGIN</b>	USA				
<b>PRODUCTION PROCEDURES</b>	<p>Antibody was affinity purified using an epitope specific to Gamma-Taxilin immobilized on solid support.</p> <p>The epitope recognized by A304-043A maps to a region between residue 478 to 528 of human Taxilin Gamma using the numbering given in entry NP_060830.2 (GeneID 55787).</p> <p>The epitopes for anti-Gamma Taxilin antibodies A304-042A and A304-043A are in close proximity, but do not overlap.</p> <p>Antibody concentration was determined by extinction coefficient: absorbance at 280 nm of 1.4 equals 1.0 mg of IgG.</p>				
<b>APPLICATIONS</b>	<p>Centrifuge tube to remove product from lid. Optimal working dilutions should be determined experimentally by the investigator. Prepare working dilution immediately before use.</p> <table><tr><td>Western Blot</td><td>1:5,000 to 1:25,000</td></tr><tr><td>Immunoprecipitation</td><td>2 to 10 mcg/mg lysate</td></tr></table>	Western Blot	1:5,000 to 1:25,000	Immunoprecipitation	2 to 10 mcg/mg lysate
Western Blot	1:5,000 to 1:25,000				
Immunoprecipitation	2 to 10 mcg/mg lysate				
<b>APPLICATION NOTES</b>	Validation by IP/Western Blot was performed using ReliaBLOT® Western Blot Gel 4-8%, 10 x 10 cm (Cat. No. WB101-40812G) and ReliaBLOT® Reagents (Cat. No. WB120). Related products include ReliaBLOT® IP/WB kits, buffers and reagents.				
<b>ADDITIONAL INFO</b>	<p><a href="http://www.bethyl.com/product/A304-043A">http://www.bethyl.com/product/A304-043A</a></p> <p>Use the link above to view a current list of citations and other product specific information.</p>				



# Gamma-Taxilin Antibody: A304-043A



**Detection of Human and Mouse Gamma-Taxilin by Western Blot.** *Samples:* Whole cell lysate (50 µg) from 293T, HeLa, Jurkat, mouse TCMK-1, and mouse NIH3T3 cells. *Antibodies:* Affinity purified rabbit anti-Gamma-Taxilin antibody A304-043A (lot A304-043A-1) used for WB at 0.04 µg/ml. *Detection:* Chemiluminescence with an exposure time of 10 seconds.



**Detection of Human Gamma-Taxilin by Western Blot of Immunoprecipitates.** *Samples:* Whole cell lysate (1 mg for IP; 20% of IP loaded) from 293T cells. *Antibodies:* Affinity purified rabbit anti-Gamma-Taxilin antibody A304-043A (lot A304-043A-1) used for IP at 6 µg/mg lysate. Gamma-Taxilin was also immunoprecipitated by rabbit anti-Gamma-Taxilin antibodies A304-041A and A304-042A. For blotting immunoprecipitated Gamma-Taxilin, A304-043A was used at 1 µg/ml. *Detection:* Chemiluminescence with an exposure time of 3 seconds.

## MATERIAL SAFETY DATA SHEET

### CONTENTS

This product contains Rabbit immunoglobulin G (IgG) protein in Tris-citrate/phosphate buffer, pH 7 to 8 containing 0.09% Sodium Azide.

### INGREDIENT DESCRIPTIONS

#### HAZARDOUS:

Sodium Azide (NaN<sub>3</sub>): Azide forms explosive chemical compounds with lead and copper plumbing. Care must be taken to wash waste down drains with large volumes of water. LD50 oral mouse 27 mg/kg. Wash all affected areas with large volumes of water and if swallowed consult your physician immediately.