

# EAR2 Antibody

Rabbit Polyclonal

Antigen Affinity Purified

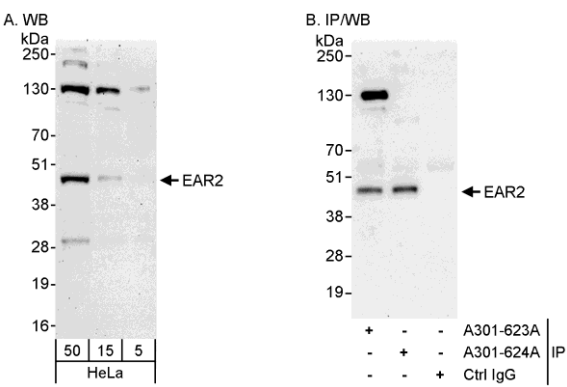
Catalog No. A301-623A

Protein ID NP\_005225.2

Gene ID 2063



<b>APPLICATIONS</b>	WB, IP
<b>REACTIVITY TESTED</b>	Human
<b>PRESUMED REACTIVITY</b>	Based on 100% sequence identity, this antibody is predicted to react with Mouse, Rat, Bovine, Dog, Pig, Orangutan, Rhesus Monkey, Chimpanzee, European domestic ferret, African elephant, Small-eared galago, Thirteen-lined ground squirrel and Little brown bat.
<b>ISOTYPE</b>	IgG
<b>AMOUNT</b>	0.1 ml at 0.2 mg/ml
<b>STORAGE/SHELF LIFE</b>	2 - 8° C / 1 year from date of receipt
<b>PHYSICAL STATE</b>	Liquid
<b>BUFFER</b>	Tris-buffered Saline containing 0.1% BSA containing 0.09% Sodium Azide
<b>ORIGIN</b>	USA
<b>PRODUCTION PROCEDURES</b>	<p>Antibody was affinity purified using an epitope specific to EAR2 immobilized on solid support.</p> <p>The epitope recognized by A301-623A maps to a region between residue 25 and 75 of human orphan nuclear receptor EAR-2 using the numbering given in entry NP_005225.2 (GeneID 2063).</p> <p>Immunoglobulin concentration was determined by extinction coefficient: absorbance at 280 nm of 1.4 equals 1.0 mg of IgG.</p>
<b>APPLICATIONS</b>	<p>Centrifuge tube to remove product from lid. Optimal working dilutions should be determined experimentally by the investigator. Prepare working dilution immediately before use.</p> <p>Western Blot 1:2,000 to 1:10,000</p> <p>Immunoprecipitation 2 to 5 µg/mg lysate</p>
<b>APPLICATION NOTES</b>	Validation by IP/Western Blot was performed using ReliaBLOT® Western Blot Gel 4-20%, 10 x 10 cm (Cat. No. WB101-42012G) and ReliaBLOT® Reagents (Cat. No. WB120). Related products include ReliaBLOT® IP/WB kits, buffers and reagents.
<b>ADDITIONAL INFO</b>	<p><a href="http://www.bethyl.com/product/A301-623A">http://www.bethyl.com/product/A301-623A</a></p> <p>Use the link above to view a current list of citations and other product specific information.</p>



**Detection of Human EAR2 by Western Blot and Immunoprecipitation.** *Samples:* RIPA whole cell lysate (5, 15 and 50 µg for WB; 1 mg for IP, 20% of IP loaded) from HeLa cells. *Antibodies:* Affinity purified rabbit anti-EAR2 antibody A301-623A used for WB at 0.1 µg/ml (A) and 0.4 µg/ml (B) and used for IP at 3 µg/mg lysate. EAR2 was also immunoprecipitated by rabbit anti-EAR2 antibody A301-624A, which recognizes a downstream epitope. *Detection:* Chemiluminescence with exposure times of 3 minutes (A) and 30 seconds (B).

MATERIAL SAFETY DATA SHEET

CONTENTS	This product contains Rabbit immunoglobulin G (IgG) protein in Tris-buffered Saline containing 0.1% BSA containing 0.09% Sodium Azide.
INGREDIENT DESCRIPTIONS	<p><b>NON-HAZARDOUS:</b></p> <p>Bovine Serum Albumin (BSA) – This product was derived from animals free of infectious or contagious diseases of U.S. Origin. No known toxicity for this biological material.</p> <p><b>HAZARDOUS:</b></p> <p>Sodium Azide (NaN3): Azide forms explosive chemical compounds with lead and copper plumbing. Care must be taken to wash waste down drains with large volumes of water. LD50 oral mouse 27 mg/kg. Wash all affected areas with large volumes of water and if swallowed consult your physician immediately.</p>