

hSET1 Antibody

Rabbit Polyclonal

Antigen Affinity Purified

Protein ID O15047

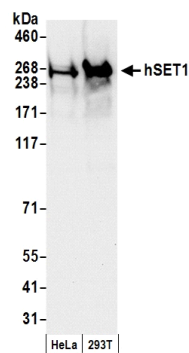
Catalog No. A300-289A-T

Gene ID 9739



APPLICATIONS	WB, IP, IHC-P, IF, ChIP-PCR, ChIP-chip
REACTIVITY TESTED	Human
PRESUMED REACTIVITY	Based on 100% sequence identity, this antibody is predicted to react with Bovine, Dog, Horse, Rabbit, Guinea pig_10141, Pig, Orangutan, Rhesus Monkey, Gorilla, Chimpanzee, White-tufted-ear marmoset, African elephant, Chinese hamster, Thirteen-lined ground squirrel and Northern white-cheeked gibbon.
ISOTYPE	IgG
AMOUNT	20 µl (2 blots)
STORAGE/SHELF LIFE	2 - 8° C / 1 year from date of receipt
PHYSICAL STATE	Liquid
BUFFER	Tris-buffered Saline with 0.1% BSA containing 0.09% Sodium Azide
ORIGIN	USA
PRODUCTION PROCEDURES	Antibody was affinity purified using an epitope specific to hSET1 immobilized on solid support. The epitope recognized by A300-289A-T maps to a region between residues 1200 and 1250 of human hSET1 (KIAA0339) using the numbering given in TrEMBL entry O15047 (GeneID 9739).
APPLICATIONS	Centrifuge tube to remove product from lid. Optimal working dilutions should be determined experimentally by the investigator. Prepare working dilution immediately before use. Western Blot 1:1000 Immunoprecipitation The antibody contained within A300-289A-T has been qualified for use in immunoprecipitation; however, we recommend using the alternative formulation of this antibody found as product A300-289A. Immunohistochemistry 1:50 to 1:200. Epitope retrieval with citrate buffer pH6.0 is recommended for FFPE tissue sections. Immunofluorescence 1:25 to 1:100 ChIP-PCR The antibody contained within A300-289A-T has been qualified for use in chromatin immunoprecipitation; however, we recommend using the alternative formulation of this antibody found as product A300-289A. ChIP-chip The antibody contained within A300-289A-T has been qualified for use in ChIP-chip; however, we recommend using the alternative formulation of this antibody found as product A300-289A.
ADDITIONAL INFO	http://www.bethyl.com/product/A300-289A-T Use the link above to view SDS, a current list of citations, and other product specific information.

hSET1 Antibody: A300-289A-T



Detection of Human hSET1 by Western Blot. *Samples:* Nuclear extract (50 µg) from HeLa and 293T cells. *Antibody:* Affinity purified rabbit anti-hSET1 antibody A300-289A-T (lot A300-289A-T-3) used for WB at 1:1000. *Detection:* Chemiluminescence with an exposure time of 10 seconds.