

**Product:** Anti-SPS (sucrose phosphate synthase)  
Global antibody

**Product no:** AS03 035A

## Product Information

**Antibody clonality:** Polyclonal

**Raised in:** Rabbit

**Purity:** Total rabbit IgG  
purified on a peptide column. Present in PBS  
pH 7.4

**Quantity:** 200 µg

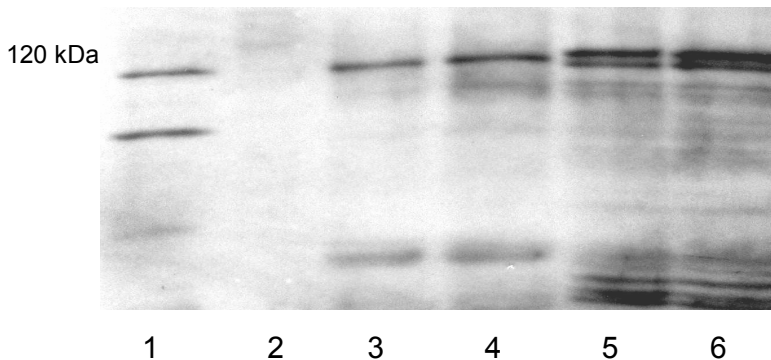
**Antibody form:** Lyophilized. For  
reconstitution please add 167 µl of sterile water.  
Please, remember to spin tubes briefly prior to opening them to  
avoid any losses that might occur from liquid or lyophilized  
material adhering to the cap or sides of the tubes.

**Storage instructions:** -20°C or -80°C long  
Term storage (years). Please, avoid freezing  
and thawing of antibodies.  
Make aliquots instead.

## Application information:

**Western Blot:** 1: 1 000

**MW:** 120 kDa



1 – Potato tuber extract; 2 – empty;  
3-4 *Arabidopsis thaliana* leaf extract;  
5-6 *Arabidopsis thaliana* + wheat leaf  
extract

### Western blot transfer conditons:

Transfer MiniProtean system).  
Blocking: in 5 % blotto non-fat milk  
powder (BioRad) in 1xTBS (20 mM Tris-  
HCl, 0,5 M NaCl, pH 7.5) + 0,1 % Tween  
20. Primary antibody incubation: 1h/RT  
It is common to see SPS fragments of  
around 90 kDa and 30 kDa

*Antibodies are intended for the research use only not for diagnostic or therapeutic use.*

Product support: [inquiry@agrisera.com](mailto:inquiry@agrisera.com), <http://www.agrisera.com>

Mailing address: Box 57, S-911 21 Vännäs, Sweden  
Phone/Fax: +46 (0)935 33033 / +46 (0)935 33044  
Website: [www.agrisera.com](http://www.agrisera.com)

International Bank Account Number (IBAN)  
SE42 6000 0000 0001 15217258, S.W.I.F.T. address: HANDSES  
Bank: Svenska Handelsbanken, S-106 70 Stockholm, Sweden  
VAT number: SE556263276901 (Tax identification number)