

## Polyclonal Antibody to Serotonin receptor 2C (HTR2C) (Cytopl. Dom.) - Aff - Purified

<b>Alternate names:</b>	5-HT-2C, 5-HT2C, 5-HTR2C, 5-hydroxytryptamine receptor 2C, 5HT-1C, HTR1C
<b>Catalog No.:</b>	SP4624P
<b>Quantity:</b>	50 µg
<b>Concentration:</b>	1.0 mg/ml
<b>Background:</b>	<p>5-HT2C, a Serotonin Receptor previously termed 5-HT1C, activates phospholipase C, resulting in a transient increase in intracellular calcium and activation of protein kinase C. Mutant mice lacking functional 5-HT2C receptor are overweight due to abnormal feeding behavior and are prone to epileptic seizures. Therefore, agonists of the 5-HT2C receptor such as m-chlorophenylpiperazine (mCPP) may be potential drugs for the treatment of obesity. However, mCPP also has unpleasant side effects such as anxiety and nausea in humans. Most psychedelic drugs bind 5-HT2A and 5-HT2C receptors, and their hallucinogenicity correlates with binding affinity.</p> <p>Expression of the 5-HT2C receptor has been reported predominantly in brain, but also in spinal cord and lung. ESTs have been isolated from human, mouse, and rat brain libraries.</p>
<b>Uniprot ID:</b>	<a href="#">P28335</a>
<b>NCBI:</b>	<a href="#">NP_000859.1</a>
<b>GeneID:</b>	<a href="#">3358</a>
<b>Host:</b>	Rabbit
<b>Immunogen:</b>	<p>Synthetic peptide - KLH conjugated Epitope: 3rd cytoplasmic domain of human <b>Genename:</b> HTR2C <b>Remarks:</b> The immunizing peptide shows 55 % identity (65 % similarity) with mouse and 60 % identity (70 % similarity) with rat.</p>
<b>Format:</b>	<p><b>State:</b> Liquid Ig fraction <b>Purification:</b> Peptide immunogen affinity column <b>Buffer System:</b> PBS, pH 7.7, containing 0.01% sodium azide</p>
<b>Applications:</b>	<p>Immunohistochemistry with formalin fixed paraffin embedded tissues: 5,6 µg/ml Antigen retrieval: Steam slides in 0.01 M sodium citrate buffer, pH 6.0, at 99-100°C for 20 min. Remove from heat and let stand at room temperature in buffer for 20 min. Rinse in 1x TBS with Tween (TBST) for 1 min. at room temperature. Other applications not tested. Optimal dilutions are dependent on conditions and should be determined by the user.</p>

**For research and in vitro use only. Not for diagnostic or therapeutic work.**

Material Safety Datasheets are available at [www.acris-antibodies.com](http://www.acris-antibodies.com) or on request.

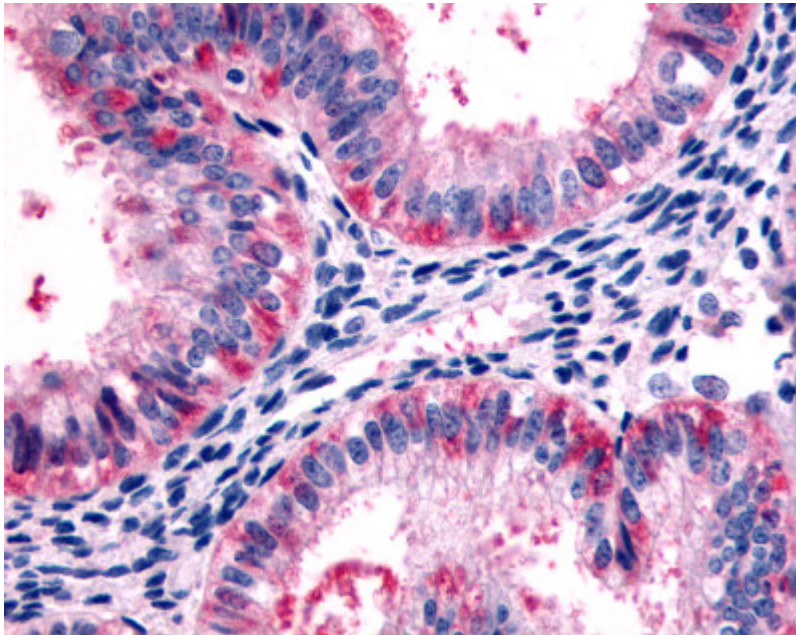
Antibody Hotline - Technical Questions - Antibody Location Service  
Free Call: 0800-2274746 (Germany only) - [www.acris-antibodies.com](http://www.acris-antibodies.com)

**Specificity:** Reacts with 5-HT<sub>2C</sub> Receptor  
(family: GPCR, subfamily: Serotonin)  
**Species:** Human.  
Other species not tested.

**Add. Information:** This product was originally produced by MBL International.

**Storage:** Store the antibody undiluted at 2-8°C for one month or (in aliquots) at -70°C for longer.  
Avoid repeated freezing and thawing.  
Shelf life: one year from despatch.

**Pictures:**



Immunohistochemical staining of Uterus (Glandular cells) using anti- HTR<sub>2C</sub> antibody SP4624P

---

**For research and in vitro use only. Not for diagnostic or therapeutic work.**

Material Safety Datasheets are available at [www.acris-antibodies.com](http://www.acris-antibodies.com) or on request.

Antibody Hotline - Technical Questions - Antibody Location Service  
Free Call: 0800-2274746 (Germany only) - [www.acris-antibodies.com](http://www.acris-antibodies.com)