

Polyclonal Antibody to Serotonin receptor 1F (HTR1F) - Aff - Purified

Alternate names:	5-HT-1F, 5-hydroxytryptamine receptor 1F, HTR1EL
Catalog No.:	SP4043P
Quantity:	50 µg
Concentration:	1 mg/ml
Background:	<p>5-HT1F, a Serotonin Receptor, is negatively coupled to adenylate cyclase. Selective 5-HT1F agonists may prove therapeutic in the treatment of migraine headache, lacking the side effects associated with the agonists of the 5-HT1B and 5-HT1D receptors.</p> <p>Expression of the 5-HT1F receptor has been reported in various brain structures, including cortex, hippocampus, trigeminal ganglia, and cerebral blood vessels. Expression in peripheral tissues is limited to uterus, mesentery, and artery. No expression has been detected in heart, kidney, liver, pancreas, or spleen.</p>
Uniprot ID:	P30939
NCBI:	NP_000857.1
GeneID:	3355
Host:	Rabbit
Immunogen:	<p>Synthetic peptide - KLH conjugated Epitope: N-terminal extracellular domain of human Genename: HTR1F Remarks: The immunizing peptide shows 94 % identity (100 % similarity) with mouse and 100 % identity (100 % similarity) with rat.</p>
Format:	<p>State: Liquid Ig fraction Purification: Peptide immunogen affinity column Buffer System: PBS, pH 7.7, containing 0.01% sodium azide</p>
Applications:	<p>Immunohistochemistry on paraffin embedded sections: 5-8 µg/ml Antigen retrieval: Steam slides in 0.01 M sodium citrate buffer, pH 6.0, at 99-100°C for 20 min. Remove from heat and let stand at room temperature in buffer for 20 min. Rinse in 1x TBS with Tween (TBST) for 1 min. at room temperature. Other applications not tested. Optimal dilutions are dependent on conditions and should be determined by the user.</p>
Specificity:	<p>This antibody reacts to Serotonin Receptor 1F (Family: GPCR, Subfamily: Serotonin). Species: Human. Other species not tested.</p>
Add. Information:	This product was originally produced by MBL International.

For research and in vitro use only. Not for diagnostic or therapeutic work.

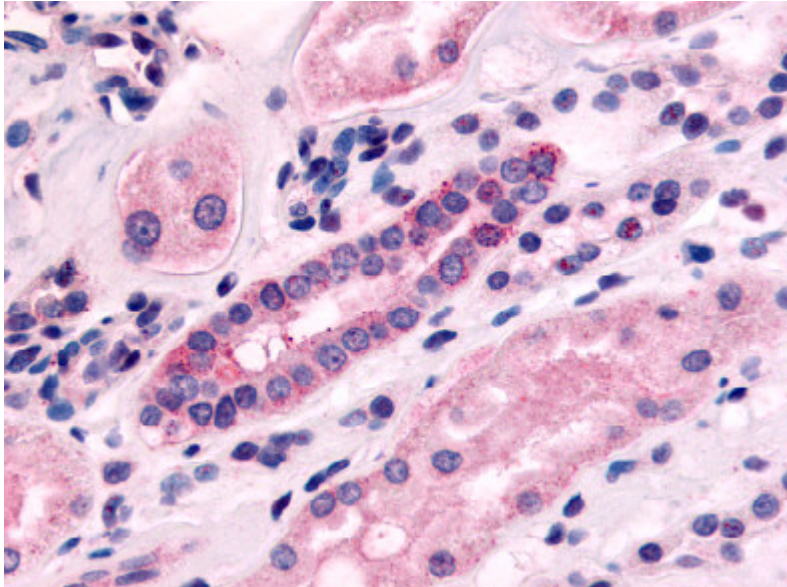
Material Safety Datasheets are available at www.acris-antibodies.com or on request.

Antibody Hotline - Technical Questions - Antibody Location Service
Free Call: 0800-2274746 (Germany only) - www.acris-antibodies.com

Storage:

Store the antibody undiluted at 2-8°C for one month or (in aliquots) at -70°C for longer.
Avoid repeated freezing and thawing.
Shelf life: one year from despatch.

Pictures:



Immunohistochemical staining of Kidney (Renal tubules) using anti- HTR1F antibody SP4034P

For research and in vitro use only. Not for diagnostic or therapeutic work.

Material Safety Datasheets are available at www.acris-antibodies.com or on request.

Antibody Hotline - Technical Questions - Antibody Location Service
Free Call: 0800-2274746 (Germany only) - www.acris-antibodies.com