

Polyclonal Antibody to LYVE-1 - Aff - Purified

Alternate names:	CRSBP-1, CRSBP1, Cell surface retention sequence-binding protein 1, Extracellular link domain-containing protein 1, HAR, Hyaluronic acid receptor, LYVE1, Lymphatic vessel endothelial hyaluronic acid receptor 1, XLKD1
Catalog No.:	DP3500PS
Quantity:	50 µg
Background:	LYVE-1 has been identified as a major receptor for HA (extracellular matrix glycosamino-glycan hyaluronan) on the lymph vessel wall. The deduced amino acid sequence of LYVE-1 predicts a 322-residue type I integral membrane polypeptide 41% similar to the CD44 HA receptor with a 212-residue extracellular domain containing a single Link module the prototypic HA binding domain of the Link protein superfamily. Like CD44, the LYVE-1 molecule binds both soluble and immobilized HA. However, unlike CD44, the LYVE-1 molecule colocalizes with HA on the luminal face of the lymph vessel wall and is completely absent from blood vessels. Hence, LYVE-1 is the first lymph-specific HA receptor to be characterized and is a uniquely powerful marker for lymph vessels.
Uniprot ID:	Q9Y5Y7
NCBI:	NP_006682.2
GeneID:	10894
Host:	Rabbit
Immunogen:	Highly pure recombinant Human soluble LYVE-1 produced in insect cells. It consists of amino acid 24 (Ser) to 232 (Gly) and is fused to a C-terminal His-tag (6xHis).
Format:	State: Lyophilized purified IgG fraction Purification: Antigen Affinity Chromatography Buffer System: PBS, pH 7.4, without preservatives or stabilizers Reconstitution: Restore in sterile water to a concentration of > 0.5 mg/ml.
Applications:	Immunohistochemistry on Frozen and Paraffin Embedded Sections (1-5 µg/ml). Heat mediated antigen retrieval is recommended when staining paraffin embedded sections. Western blot (1-2 µg/ml). ELISA (1-15 µg/ml). Flow Cytometry (3-20 µg/ml). Other applications not tested. Optimal dilutions are dependent on conditions and should be determined by the user.
Specificity:	This antibody will detect LYVE-1 on the surface of lymphatic endothelial cells by Immunohistochemistry. It detects a 70 kD LYVE-1 band in Western blotting. This antibody is not reactive with Mouse LYVE-1.

For research and in vitro use only. Not for diagnostic or therapeutic work.

Material Safety Datasheets are available at www.acris-antibodies.com or on request.

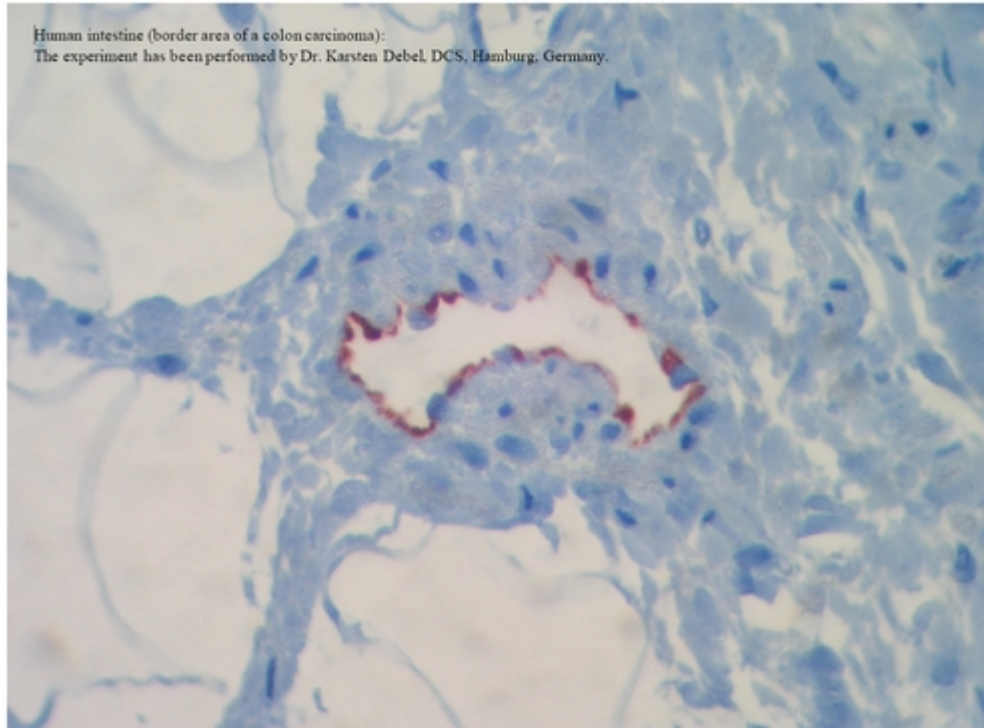
Antibody Hotline - Technical Questions - Antibody Location Service
Free Call: 0800-2274746 (Germany only) - www.acris-antibodies.com

Species Reactivity: Tested: Human.

Storage: Store the lyophilized antibody at 2-8°C for one month or (in aliquots) at -20°C for longer. When reconstituted the antibody is stable for one month at 2-8°C. Avoid repeated freezing and thawing. Shelf life: One year from despatch.

General References: 1. Carriera et al., Cancer Res 61:8079, 2001.
2. Jackson DG Trends Cardiovasc Med 13:1, 2003.
3. Sleeman et al., Microsc Res Tech 55:61, 2001.
4. Mäkinen et al., EMBO J 20 : 4762, 2001.

Pictures:



LYVE-1 antibody staining of Human Intestine (border area of a Colon Carcinoma).
The experiment has been performed by Dr. Karsten Debel, DCS, Hamburg, Germany.

For research and in vitro use only. Not for diagnostic or therapeutic work.

Material Safety Datasheets are available at www.acris-antibodies.com or on request.

Antibody Hotline - Technical Questions - Antibody Location Service
Free Call: 0800-2274746 (Germany only) - www.acris-antibodies.com