

## Monoclonal Antibody to ACTA2 / aortic smooth muscle Actin - Purified

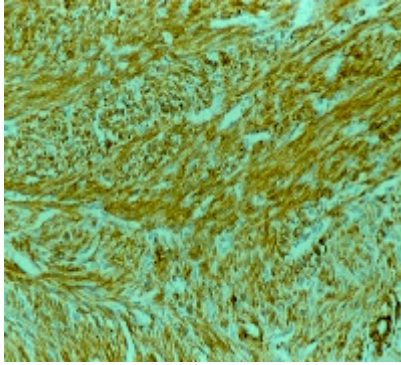
<b>Alternate names:</b>	ACTSA, ACTVS, Alpha-actin-2, Cell growth-inhibiting gene 46 protein
<b>Catalog No.:</b>	DM001-05
<b>Quantity:</b>	0.5 ml
<b>Background:</b>	Smooth muscle actin is expressed in normal smooth muscle and in myoepithelial cells, and also in tumours derived from these cells. Actins are involved in maintaining the structure and integrity of a cell, as well as cell motility. They are highly conserved proteins and make up the majority of the contractile apparatus. To date, six different actin isoforms have been described.
<b>Uniprot ID:</b>	<a href="#">P62736</a>
<b>NCBI:</b>	<a href="#">NP_001135417.1</a>
<b>GeneID:</b>	<a href="#">59</a>
<b>Host / Isotype:</b>	Mouse / IgG2a
<b>Clone:</b>	1A4/asm-1
<b>Immunogen:</b>	N-terminal decapeptide of alpha-smooth muscle Actin
<b>Format:</b>	<b>State:</b> Liquid purified Ig fraction containing Sodium Azide as preservative
<b>Applications:</b>	<b>Immunohistochemistry on Formalin Fixed Paraffin Embedded Sections:</b> Use Actin antibody at 1/25-1/50 dilution in an ABC method for 30 minutes at room temperature. <i>Recommended Positive Control:</i> Leiomyoma. Other applications not tested. Optimal dilutions are dependent on conditions and should be determined by the user.
<b>Specificity:</b>	This antibody is specific to alpha-smooth isoform of actin. It reacts with smooth muscle cells of vessels and different parenchymes. The antibody does not cross-react with beta and gamma-cytoplasmic, alpha-sarcomeric and alpha-myocardial actin isoforms. Cellular Localization: Cytoplasmic. <b>Species:</b> Bovine, Chicken, Human, Mouse, Rabbit and Rat. Other species not tested.
<b>Storage:</b>	Store the antibody undiluted at 2-8°C. Shelf life: one year from despatch.
<b>General References:</b>	1. Skalli et al. Am J Cell Biol 103: 2787, 1986. 2. Skalli et al. Lab Invest 60: 275, 1989. 3. Skalli et al. J Histo Chem 37: 315, 1989. 4. O'Byrne et al. Br J cancer 82: 1427, 2000.

**For research and in vitro use only. Not for diagnostic or therapeutic work.**

Material Safety Datasheets are available at [www.acris-antibodies.com](http://www.acris-antibodies.com) or on request.

Antibody Hotline - Technical Questions - Antibody Location Service  
Free Call: 0800-2274746 (Germany only) - [www.acris-antibodies.com](http://www.acris-antibodies.com)

Pictures:



Formalin fixed paraffin embedded human leiomyoma stained with Smooth Muscle Actin antibody DM001.

---

**For research and in vitro use only. Not for diagnostic or therapeutic work.**

Material Safety Datasheets are available at [www.acris-antibodies.com](http://www.acris-antibodies.com) or on request.

Antibody Hotline - Technical Questions - Antibody Location Service  
Free Call: 0800-2274746 (Germany only) - [www.acris-antibodies.com](http://www.acris-antibodies.com)