

Polyclonal Antibody to Serotonin receptor 3E (HTR3E) (Center) - Aff - Purified

Alternate names:	5-HT3E, 5-hydroxytryptamine receptor 3E
Catalog No.:	AP50002PU-N
Quantity:	0.4 ml
Concentration:	lot specific
Background:	The product of this gene belongs to the ligand-gated ion channel receptor superfamily. HTR3E encodes a subunit E of the type 3 receptor for 5-hydroxytryptamine (serotonin), a biogenic hormone that functions as a neurotransmitter, a hormone, and a mitogen. This receptor causes fast, depolarizing responses in neurons after activation. Genes encoding subunits C, D and E form a cluster on chromosome 3. An alternative splice variant has been described but its full length sequence has not been determined.
Uniprot ID:	A5X5Y0
NCBI:	NP_872395
GeneID:	285242
Host / Isotype:	Rabbit / Ig
Immunogen:	KLH conjugated synthetic peptide between 133-162 amino acids from the Central region of human 5HT3E.
Format:	State: Liquid purified Ig fraction Purification: Affinity chromatography on Protein A Buffer System: PBS containing 0.09% (W/V) sodium azide as preservative
Applications:	ELISA: 1/1000. Western blotting: 1/100 - 1/500 Flow Cytometry: 1/10 - 1/50. Other applications not tested. Optimal dilutions are dependent on conditions and should be determined by the user.
Specificity:	This antibody reacts to Serotonin receptor 3E.
Species Reactivity:	Tested: Human.
Add. Information:	Molecular Weight: 51438 Da
Storage:	Store the antibody undiluted at 2-8°C for one month or (in aliquots) at -20°C for longer. Avoid repeated freezing and thawing. Shelf life: one year from despatch.
General Readings:	Walstab, J., et al. J. Biol. Chem. 285(35):26956-26965(2010) Hammer, C., et al. Pharmacogenomics 11(7):943-950(2010) Lennertz, L., et al. Eur Neuropsychopharmacol 20(6):414-420(2010) Goecke, T.W., et al. Acta Obstet Gynecol Scand 89(1):7-14(2010)

For research and in vitro use only. Not for diagnostic or therapeutic work.

Material Safety Datasheets are available at www.acris-antibodies.com or on request.

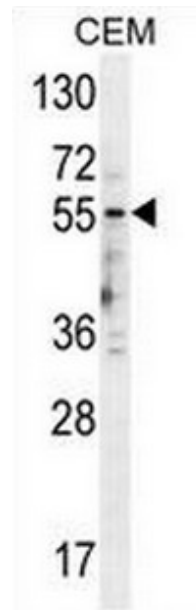
Antibody Hotline - Technical Questions - Antibody Location Service
Free Call: 0800-2274746 (Germany only) - www.acris-antibodies.com



Schuhmacher, A., et al. Pharmacogenet. Genomics 19(11):843-851(2009)

Pictures:

5HT3E Antibody (Center) (Cat. #AP50002PU-N) western blot analysis in CEM cell line lysates (35 µg/lane). This demonstrates the 5HT3E antibody detected the 5HT3E protein (arrow)



5HT3E Antibody (Center) (Cat. #AP50002PU-N) flow cytometric analysis of CEM cells (right histogram) compared to a negative control cell (left histogram). FITC-conjugated goat-anti-rabbit secondary antibodies were used for the analysis

