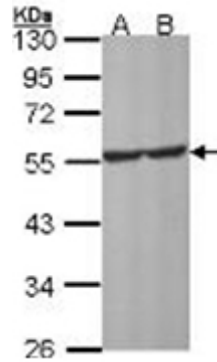


## Polyclonal Antibody to Serotonin receptor 1A (HTR1A) - Aff - Purified

|                            |   |
|----------------------------|---|
| <b>Alternate names:</b>    | 5-HT-1A, 5-HT1A, 5-hydroxytryptamine receptor 1A, ADRB2RL1, ADRBRL1   |
| <b>Catalog No.:</b>        | AP31913PU-N   |
| <b>Quantity:</b>           | 0.1 ml  |
| <b>Concentration:</b>      | 1.0 mg/ml   |
| <b>Background:</b>         | This is one of the several different receptors for 5-hydroxytryptamine (serotonin), a biogenic hormone that functions as a neurotransmitter, a hormone, and a mitogen. The activity of this receptor is mediated by G proteins that inhibit adenylate cyclase activity. |
| <b>Uniprot ID:</b>         | <a href="#">P08908</a>  |
| <b>NCBI:</b>               | <a href="#">NP_000515.2</a>   |
| <b>GeneID:</b>             | <a href="#">3350</a>  |
| <b>Host / Isotype:</b>     | Rabbit / IgG  |
| <b>Immunogen:</b>          | Synthetic peptide corresponding to a region within amino acids 178 and 270 of 5HT1A receptor  |
| <b>Format:</b>             | <b>State:</b> Liquid purified IgG fraction<br><b>Purification:</b> Antigen Affinity Chromatography<br><b>Buffer System:</b> 1xPBS, 40% Glycerol, pH7<br><b>Preservatives:</b> 0.01% Thimerosal  |
| <b>Applications:</b>       | <b>Western Blot:</b> 1/500-1/3000.<br><i>Positive Controls:</i> 293T, A431, H1299, HeLa, HepG2, Molt-4, Raji, adrenal L1, D-hippocampus C9.<br>Other applications not tested. Optimal dilutions are dependent on conditions and should be determined by the user.       |
| <b>Molecular Weight:</b>   | 46 kDa  |
| <b>Specificity:</b>        | This antibody recognizes 5HT1A receptor (5-hydroxytryptamine (serotonin) receptor 1A).  |
| <b>Species Reactivity:</b> | <b>Tested:</b> Human, Mouse.<br><b>Expected from sequence similarity:</b> Monkey (100%).  |
| <b>Storage:</b>            | Store the antibody undiluted (in aliquots) at -20°C.<br>Avoid repeated freezing and thawing.<br>Shelf life: one year from despatch.   |

Pictures:

Western Blot analysis using 5HT1A receptor antibody Cat.-No AP31913PU-N at 1/1000 dilution. Sample (30 ug of whole cell lysate), 10% SDS PAGE.  
A: Molt-4.  
B: Raji



Western Blot analysis using 5HT1A receptor antibody Cat.-No AP31913PU-N at 1/1000 dilution. Sample (30 ug of whole cell lysate), 10% SDS PAGE.  
A: NIH-3T3

