

Polyclonal Antibody to Neuregulin 1 (Center) - Purified

Alternate names:	Acetylcholine receptor-inducing activity, Breast cancer cell differentiation factor p45, GGF, Glial growth factor, HGL, HRG, HRGA, Heregulin, NDF, NRG1, Neu differentiation factor, Pro-neuregulin-1 membrane-bound isoform, SMDF, Sensory and motor neuron-derived factor
Catalog No.:	AP13195PU-N
Quantity:	0.4 ml
Concentration:	lot specific
Background:	Neuregulin 1 (NRG1) was originally identified as a 44-kD glycoprotein that interacts with the NEU/ERBB2 receptor tyrosine kinase to increase its phosphorylation on tyrosine residues. It is known that an extraordinary variety of different isoforms are produced from the NRG1 gene by alternative splicing. These isoforms include heregulins (HRGs), glial growth factors (GGFs) and sensory and motor neuron-derived factor (SMDF). They are tissue-specifically expressed and differ significantly in their structure. The HRG isoforms all contain immunoglobulin (Ig) and epidermal growth factor-like (EGF-like) domains. GGF and GGF2 isoforms contain a kringle-like sequence plus Ig and EGF-like domains; and the SMDF isoform shares only the EGF-like domain with other isoforms. The receptors for all NRG1 isoforms are the ERBB family of tyrosine kinase transmembrane receptors. Through interaction with ERBB receptors, NRG1 isoforms induce the growth and differentiation of epithelial, neuronal, glial, and other types of cells.
Uniprot ID:	Q02297
NCBI:	9606
GeneID:	3084
Host / Isotype:	Rabbit / Ig
Immunogen:	This antibody is generated from rabbits immunized with a KLH conjugated synthetic peptide selected from the center region of human NRG1.
Format:	State: Liquid purified Ig Purification: Protein G column, eluted with high and low pH buffers and neutralized immediately, followed by dialysis against PBS Buffer System: PBS with 0.09% (W/V) sodium azide
Applications:	ELISA: 1/1,000. Western Blot: 1/50 - 1/100. Immunohistochemistry: 1/50 - 1/100. Other applications not tested. Optimal dilutions are dependent on conditions and should be determined by the user.
Specificity:	This antibody reacts to NRG1. Species: Human. Other species not tested.

For research and in vitro use only. Not for diagnostic or therapeutic work.
Material Safety Datasheets are available at www.acris-antibodies.com or on request.

Antibody Hotline - Technical Questions - Antibody Location Service
Free Call: 0800-2274746 (Germany only) - www.acris-antibodies.com

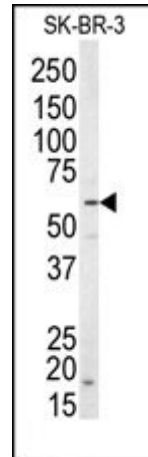
Storage: Store the antibody undiluted at 2-8°C for one month or (in aliquots) at -20°C for longer. Avoid repeated freezing and thawing. Shelf life: one year from despatch.

Caution: This product is for research use only. Not for use in diagnostic or therapeutic procedures.

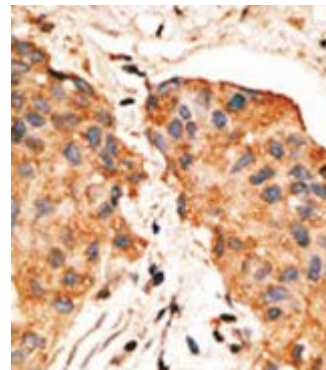
General Readings:

1. Stove, C., et al., J. Invest. Dermatol. 121(4):802-812 (2003).
2. Adelaide, J., et al., Genes Chromosomes Cancer 37(4):333-345 (2003).
3. Ritch, P.A., et al., J. Biol. Chem. 278(23):20971-20978 (2003).
4. Vermeer, P.D., et al., Nature 422(6929):322-326 (2003).
5. Atlas, E., et al., Mol. Cancer Res. 1(3):165-175 (2003).

Pictures: Western blot analysis of anti-NRG1 Antibody (Center) in SK-BR-3 cell line lysates (35ug/lane). NRG1 (arrow) was detected using the purified Pab.



Formalin-fixed and paraffin-embedded human cancer tissue reacted with the primary antibody, which was peroxidase-conjugated to the secondary antibody, followed by DAB staining.



Recommended Control Peptides: AP13195CP-N

For research and in vitro use only. Not for diagnostic or therapeutic work.

Material Safety Datasheets are available at www.acris-antibodies.com or on request.

Antibody Hotline - Technical Questions - Antibody Location Service
Free Call: 0800-2274746 (Germany only) - www.acris-antibodies.com