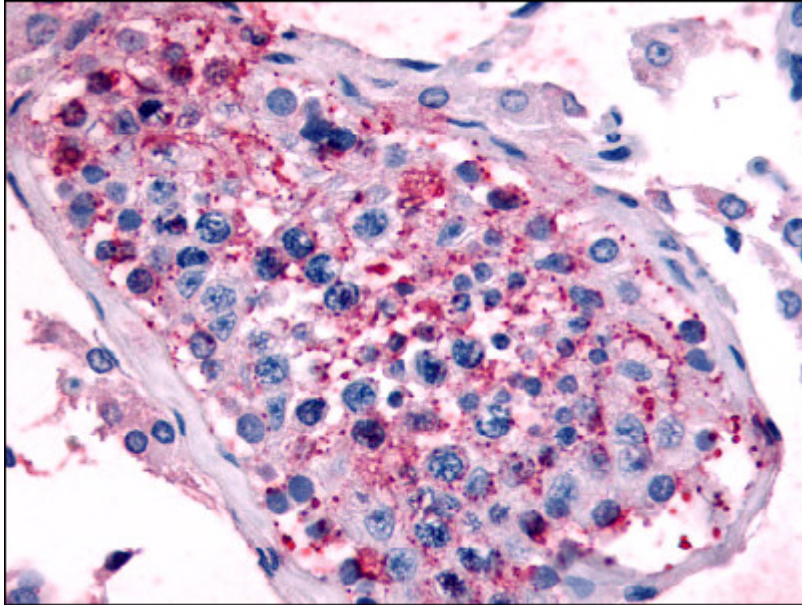


Polyclonal Antibody to 5-HT1E Receptor - Aff - Purified -

Alternate names:	5-HT-1E, 5-HT1E, 5-hydroxytryptamine receptor 1E
Catalog No.:	AP06986PU-N
Quantity:	50 µg
Concentration:	1.0 mg/ml
Background:	5HT1E, a Serotonin Receptor, is not well studied. It is classified as an 5-HT1-like receptor because of its ligand-binding and effector-coupling characteristics. The human 5-HT1E receptor has been studied in an African green monkey kidney cell line, in which it modulated cAMP levels upon binding serotonin. Lack of structural variants in the human gene indicate a highly conserved protein.
Uniprot ID:	P28566
NCBI:	NP_000856.1
GeneID:	3354
Host:	Rabbit
Immunogen:	HTR1E antibody was raised against synthetic peptide from 3rd cytoplasmic domain of human HTR1E / 5-HT1E.
Format:	State: Liquid purified Ig fraction Purification: Immunoaffinity Chromatography Buffer System: PBS containing 0.09% sodium azide as preservative
Applications:	Immunohistochemistry on paraffin sections: 16 - 24 µg/ml; after heat induced antigen retrieval in pH 6.0 citrate buffer. Other applications not tested. Optimal dilutions are dependent on conditions and should be determined by the user.
Specificity:	This antibody detects 5-HT1E Receptor (HTR1E), 3rd cytoplasmic domain. Species: Human. Other species not tested.
Storage:	Store the antibody undiluted at 2-8°C for one month or (in aliquots) at -20°C to -70°C for longer. Avoid repeated freezing and thawing. Shelf life: one year from despatch.

Pictures:



Testis: Formalin-Fixed Paraffin-Embedded (FFPE)

For research and in vitro use only. Not for diagnostic or therapeutic work.
Material Safety Datasheets are available at www.acris-antibodies.com or on request.

Antibody Hotline - Technical Questions - Antibody Location Service
Free Call: 0800-2274746 (Germany only) - www.acris-antibodies.com