

## Monoclonal Antibody to CD340 / ERBB2 / HER2 (Extracell. Dom.) - Purified

<b>Alternate names:</b>	HER-2, MNL19, NEU, NEU proto-oncogene, NGL, Receptor tyrosine-protein kinase erbB-2, Tyrosine kinase-type cell surface receptor HER2, c-erbB-2, p185erbB2
<b>Catalog No.:</b>	AM32437PU-M
<b>Quantity:</b>	0.5 ml
<b>Background:</b>	c-erbB-2 is a receptor tyrosine kinase of the c-erbB family. It is closely related in structure to the epidermal growth factor receptor. c-erbB-2 oncoprotein is detectable in a proportion of breast and other adenocarcinomas, as well as transitional cell carcinomas.
<b>Uniprot ID:</b>	<a href="#">P04626</a>
<b>NCBI:</b>	<a href="#">9606</a>
<b>GenEID:</b>	<a href="#">2064</a>
<b>Host / Isotype:</b>	Rabbit / IgG
<b>Recommended Isotype Controls:</b>	PP501P
<b>Clone:</b>	SP101
<b>Immunogen:</b>	Recombinant protein encoding extracellular domain of Human c-erbB-2.
<b>Format:</b>	<b>State:</b> Liquid purified Ig fraction <b>Purification:</b> Protein A/G Chromatography <b>Buffer System:</b> PBS <b>Preservatives:</b> 0.09% Sodium Azide <b>Stabilizers:</b> 1% BSA
<b>Applications:</b>	<b>Immunohistochemistry on Formalin-Fixed, Paraffin-Embedded tissues:</b> 1/100. Boil tissue section in 10mM citrate buffer, pH 6.0 for 10 min followed by cooling at room temperature for 20 min. <i>Incubation Time:</i> 10 minutes at room temperature. <i>Positive Control:</i> Breast carcinoma. Other applications not tested. Optimal dilutions are dependent on conditions and should be determined by the user.
<b>Molecular Weight:</b>	185 kDa
<b>Specificity:</b>	This antibody recognizes Human CD340 / ERBB2 / HER2. Cellular Localization. Membrane.
<b>Species Reactivity:</b>	<b>Expected from sequence similarity:</b> Dog, Hamster, Mouse, Rat.

**Storage:**

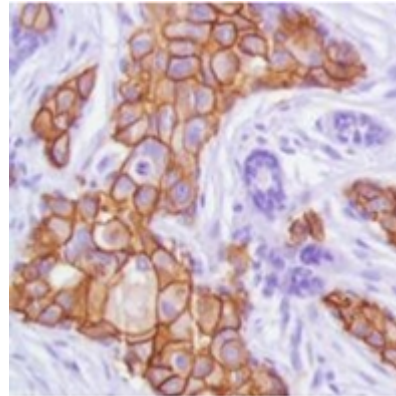
Store undiluted at 2-8°C.

**DO NOT FREEZE!**

Shelf life: one year from despatch.

**Pictures:**

Human Breast Carcinoma stained with  
anti-c-erbB-2/HER-2 antibody



---

**For research and in vitro use only. Not for diagnostic or therapeutic work.**

Material Safety Datasheets are available at [www.acris-antibodies.com](http://www.acris-antibodies.com) or on request.

Antibody Hotline - Technical Questions - Antibody Location Service  
Free Call: 0800-2274746 (Germany only) - [www.acris-antibodies.com](http://www.acris-antibodies.com)