

Monoclonal Antibody to CD340 / ERBB2 / HER2 - Purified

Alternate names:	HER-2, MNL19, NEU, NEU proto-oncogene, NGL, Receptor tyrosine-protein kinase erbB-2, Tyrosine kinase-type cell surface receptor HER2, c-erbB-2, p185erbB2
Catalog No.:	AM31701PU-N
Quantity:	50 µg
Concentration:	0.5 mg/ml
Background:	A tyrosine kinase receptor in the EGF-receptor family. ErbB2 does not bind ligand on its own, but acts as an amplifier in heterodimers with ErbB1, (EGFR), ErbB3, or ErbB4. Amplification of the ErbB2 gene and overexpression of ErbB2 protein is associated with breast cancer (~25% of cases), and anti-ErbB2 therapeutics (e. g. Herceptin, an anti-ErbB2 monoclonal antibody) are sometimes effective in treating these cases. Overexpression of ErbB2 has also been indicated as a factor in prostate cancer.
Uniprot ID:	P04626
NCBI:	NP_001005862
GeneID:	2064
Host / Isotype:	Mouse / IgG2b
Recommended Isotype Controls:	SM12P, AM03110PU-N
Clone:	4E1
Immunogen:	Recombinant Human ERBB2
Format:	State: Liquid purified Ig fraction Purification: Protein A Chromatography Buffer System: PBS, pH 7.2
Applications:	ELISA (Recombinant protein). Western Blot. Immunofluorescence. Immunohistochemistry on Paraffin Sections: 5 µg/ml. Other applications not tested. Optimal dilutions are dependent on conditions and should be determined by the user.
Specificity:	Recognizes CD340 / ERBB2
Species Reactivity:	Tested: Human.
Storage:	Store the antibody undiluted at 2-8°C for one month or (in aliquots) at -20°C for longer. Avoid repeated freezing and thawing. Shelf life: one year from despatch.

For research and in vitro use only. Not for diagnostic or therapeutic work.

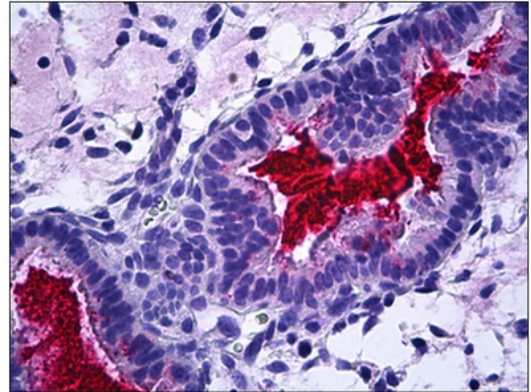
Material Safety Datasheets are available at www.acris-antibodies.com or on request.

Antibody Hotline - Technical Questions - Antibody Location Service
Free Call: 0800-2274746 (Germany only) - www.acris-antibodies.com

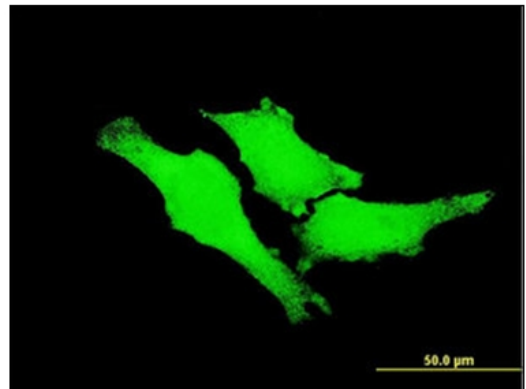


Pictures:

Human Uterus, Endometrium: Formalin-Fixed, Paraffin-Embedded (FFPE)



Immunofluorescence of monoclonal antibody to ERBB2 on HeLa cell at 10 µg/ml



Detection limit for recombinant GST tagged ERBB2 is 1 ng/ml as a capture antibody

