

Monoclonal Antibody to Trefoil factor 1 / pS2 - Aff - Purified

| | |
|-------------------------|---|
| Alternate names: | BCEI, Breast cancer estrogen-inducible protein, PNR-2, Polypeptide P1.A, TFF1 |
| Catalog No.: | AM21051PU-N |
| Quantity: | 0.1 mg |
| Concentration: | 0.2 mg/ml |
| Background: | Trefoil Factor 1 has been described as a stabilizer of the mucous gel overlying the gastrointestinal mucosa that provides a physical barrier against various noxious agents. TFF1 may inhibit the growth of calcium oxalate crystals in urine. |
| Uniprot ID: | P04155 |
| NCBI: | NP_003216 |
| GeneID: | 7031 |
| Host / Isotype: | Mouse / IgG1 |
| Clone: | C-3D5 |
| Immunogen: | Peptide C57 to F84 from Human Trefoil Factor 1. Antigen/Epitope: The antigen is Trefoil Factor 1, the epitope is located in the C-terminal region. |
| Format: | State: Lyophilized purified Ig fraction Purification: Affinity Chromatography Buffer System: Stock solution contains 0.2 mg/ml IgG, PBS, pH 7.2 with 5 mg/ml BSA as stabilizer and 0.01% Kathon as a preservative Reconstitution: Restore with 0.5 ml distilled water. |
| Applications: | Immunohistochemistry on Frozen Sections: 1 µg/ml (1/200). Immunohistochemistry on Paraffin Sections: 0.4-2 µg/ml (1/100-1/500). Microwave pretreatment for antigen retrieval is required. <i>Suggested Positive Control:</i> Human Lung Tissue, Swine Stomach. Other applications not tested. Optimal dilutions are dependent on conditions and should be determined by the user. |
| Specificity: | This Monoclonal antibody detects Human/Porcine Trefoil Factor 1 (TFF1). Antigen Distribution: The antigen has been described in stomach, with highest levels in the upper gastric mucosal cells. Detected in goblet cells of the small and large intestine and rectum, small submucosal glands in the esophagus, mucous acini of the sublingual gland, submucosal glands of the trachea, and epithelial cells lining the exocrine pancreatic ducts but not in the remainder of the. Scattered expression is detected in the epithelial cells of the gallbladder and submucosal glands of the vagina, and weak expression is observed in the bronchial goblet cells of the pseudostratified epithelia in the respiratory |

For research and in vitro use only. Not for diagnostic or therapeutic work.

Material Safety Datasheets are available at www.acris-antibodies.com or on request.

Antibody Hotline - Technical Questions - Antibody Location Service
Free Call: 0800-2274746 (Germany only) - www.acris-antibodies.com



system. Detected in urine. Strongly expressed in breast cancer but at low levels in normal mammary tissue. It is regulated by estrogen in MCF-7 cells.

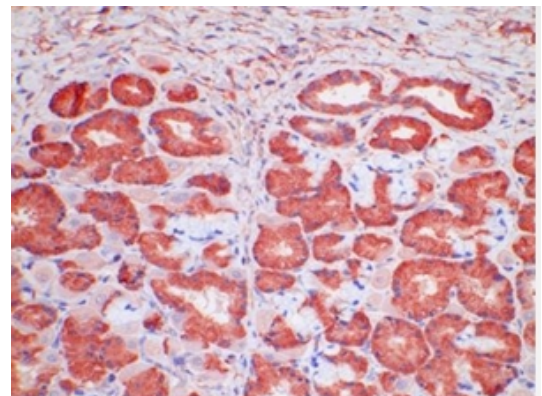
Strong expression found in normal gastric mucosa and in the regenerative tissues surrounding ulcerous lesions of gastrointestinal tract, but lower expression found in gastric cancer (Swissprot).

Species Reactivity: Tested: Human, Pig.

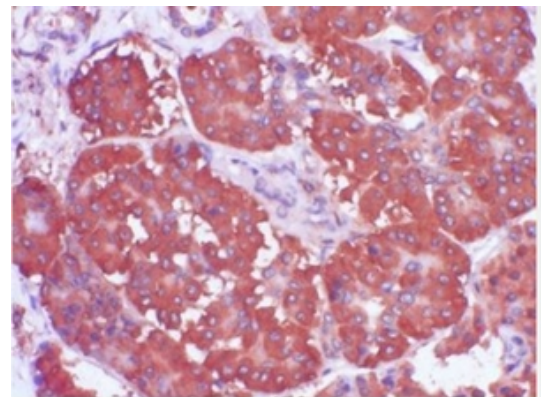
Storage: Store the lyophilized antibody at 2- 8°C.
Following reconstitution, store at -20°C.
Avoid repeated freezing and thawing.
Shelf life: one year from despatch.

General Readings: 1. Rio MC, Bellocq JP, Daniel JY, Tomasetto C, Lathe R, Chenard MP, et al. Breast cancer-associated pS2 protein: synthesis and secretion by normal stomach mucosa. Science. 1988 Aug 5;241(4866):705-8. PubMed PMID: 3041593.

Pictures: Swine Stomach, Paraffin Section stained with TFF1 Antibody Cat.-No AM21051PU-N (Clone C-3D5)



Human Pancreas, Paraffin Section stained with TFF1 Antibody Cat.-No AM21051PU-N (Clone C-3D5)



Human Trachea Frozen Section stained with TFF1 Antibody Cat.-No AM21051PU-N (Clone C-3D5)

