

Monoclonal Antibody to CD338 / ABCG2 / BCRP1 - Ascites

Alternate names:	ABCP, ATP-binding cassette sub-family G member 2, Breast cancer resistance protein 1, MXR, Mitoxantrone resistance-associated protein, Placenta-specific ATP-binding cassette transporter
Catalog No.:	AM06628SU-N
Quantity:	0.1 ml
Background:	The membrane-associated protein encoded by this gene is included in the superfamily of ATP-binding cassette (ABC) transporters. ABC proteins transport various molecules across extra- and intra-cellular membranes. ABC genes are divided into seven distinct subfamilies (ABC1, MDR/TAP, MRP, ALD, OABP, GCN20, White). This protein is a member of the White subfamily. Alternatively referred to as a breast cancer resistance protein, this protein functions as a xenobiotic transporter which may play a major role in multi-drug resistance. It likely serves as a cellular defense mechanism in response to mitoxantrone and anthracycline exposure. Significant expression of this protein has been observed in the placenta, which may suggest a potential role for this molecule in placenta tissue. Tissue specificity: Highly expressed in placenta. Low expression in small intestine, liver and colon.
Uniprot ID:	Q9UNQ0
NCBI:	NP_004818.2
GeneID:	9429
Host / Isotype:	Mouse / IgG1
Clone:	3G8
Immunogen:	Purified recombinant fragment of human ABCG2 expressed in E. Coli.
Format:	State: Ascitic fluid containing 0.03% sodium azide.
Applications:	Western Blot: 1/500 - 1/2000. Immunohistochemistry on paraffin sections: 1/200 - 1/1000. Immunofluorescence: 1/200 - 1/1000. Flow cytometry: 1/200 - 1/400. ELISA: 1/10000. Other applications not tested. Optimal dilutions are dependent on conditions and should be determined by the user.
Molecular Weight:	72 kDa
Specificity:	This antibody reacts to ABCG2.
Species Reactivity:	Tested: Human, Mouse and Monkey.

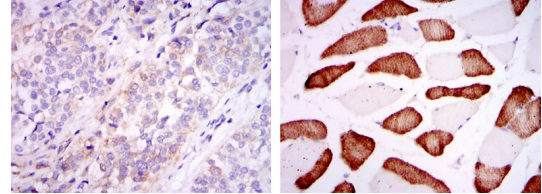
For research and in vitro use only. Not for diagnostic or therapeutic work.
Material Safety Datasheets are available at www.acris-antibodies.com or on request.

Antibody Hotline - Technical Questions - Antibody Location Service
Free Call: 0800-2274746 (Germany only) - www.acris-antibodies.com

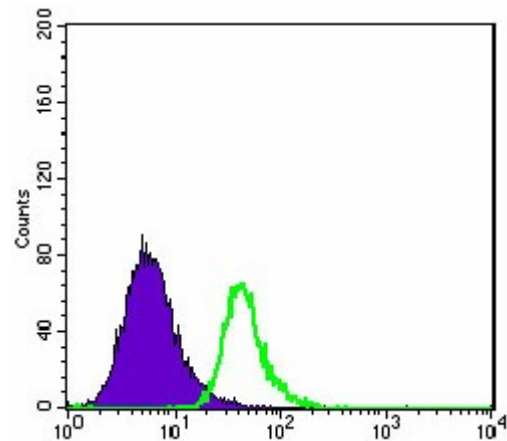
Storage: Store the antibody undiluted at 2-8°C for one month or (in aliquots) at -20°C for longer. Avoid repeated freezing and thawing. Shelf life: one year from despatch.

General Readings: 1. Carcinogenesis. 2008 Dec;29(12):2289-97.
2. Pharm Res. 2009 Feb;26(2):449-58.

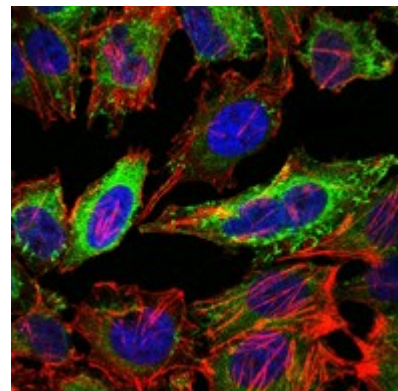
Pictures: Immunohistochemical analysis of paraffin-embedded bladder cancer tissues (left) and skeletal muscle tissues (right) using ABCG2 mouse mAb with DAB staining.



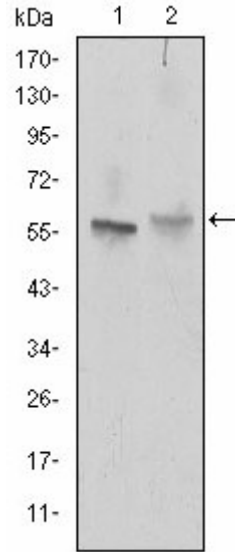
Flow cytometric analysis of HepG2 cells using ABCG2 mouse mAb (green) and negative control (purple).



Immunofluorescence analysis of HeLa cells using ABCG2 mouse mAb (green). Blue: DRAQ5 fluorescent DNA dye. Red: Actin filaments have been labeled with Alexa Fluor-555 phalloidin.



Western blot analysis using ABCG2 mouse mAb against NIH/3T3 (1) and Cos7 (2) cell lysate.



Red: Control Antigen (100ng) Purple: Antigen (10ng) Green: Antigen (50ng) Blue: Antigen (100ng)

