

## Monoclonal Antibody to Trefoil factor 1 / pS2 - Purified

<b>Alternate names:</b>	BCEI, Breast cancer estrogen-inducible protein, PNR-2, Polypeptide P1.A, TFF1
<b>Catalog No.:</b>	AM05313PU-N
<b>Quantity:</b>	0.1 mg
<b>Concentration:</b>	Lot specific
<b>Background:</b>	Several studies have shown that pS2 is primarily expressed in estrogen receptor-positive breast tumors and it may define a subset of estrogen-dependent tumors that displays an increased likelihood of response to endocrine therapy.
<b>Uniprot ID:</b>	<a href="#">P04155</a>
<b>NCBI:</b>	<a href="#">NP_003216</a>
<b>GeneID:</b>	<a href="#">7031</a>
<b>Host / Isotype:</b>	Mouse / IgG1
<b>Recommended Isotype Controls:</b>	SM10P (for use in human samples), AM03095PU-N
<b>Clone:</b>	pS2.1
<b>Immunogen:</b>	Hybridoma produced by the fusion of splenocytes from BALB/c mice immunized with synthetic peptide of 31 amino acids from the C-terminus of human pS2 protein and mouse myeloma p3-NS1-Ag4-1 cells.
<b>Format:</b>	<b>State:</b> Liquid purified IgG fraction. <b>Buffer System:</b> PBS containing 0.08% Sodium Azide as preservative.
<b>Applications:</b>	This antibody can be used for Immunohistochemistry on Frozen and Formalin/paraffin embedded tissues at 2-4 µg/ml. <b>Positive Control:</b> Breast carcinomas. Other applications not tested. Optimal dilutions are dependent on conditions and should be determined by the user.
<b>Specificity:</b>	It recognizes a polypeptide of 6.5 kDa which is identified as pS2 estrogen-regulated protein. <b>Species:</b> Human. Other species not tested.
<b>Storage:</b>	Store the antibody at -20°C. Avoid repeated freezing and thawing. Shelf life: One year from despatch.
<b>General Readings:</b>	1. Masiakowski P, Breathnach R, Bloch J, Gannon F, Krust A, Chambon P. Cloning of cDNA sequences of hormone-regulated genes from the MCF-7 human breast cancer cell line. Nucleic Acids Res. 1982 Dec 20;10(24):7895-903. PubMed PMID: 6897676. 2. Jeltsh JM, et al. Structure of human oestrogen-responsive gene pS2. Nucleic Acids Res

**For research and in vitro use only. Not for diagnostic or therapeutic work.**

Material Safety Datasheets are available at [www.acris-antibodies.com](http://www.acris-antibodies.com) or on request.

Antibody Hotline - Technical Questions - Antibody Location Service  
Free Call: 0800-2274746 (Germany only) - [www.acris-antibodies.com](http://www.acris-antibodies.com)



15:1401-1414, 1987.

3. Mori K, et al. Complete primary structure of the oestrogen-responsive gene (pS2) product. *J Biochem* 107:73-76, 1990

4. Rio MC, Bellocq JP, Daniel JY, Tomasetto C, Lathe R, Chenard MP, et al. Breast cancer-associated pS2 protein: synthesis and secretion by normal stomach mucosa. *Science*. 1988 Aug 5;241(4866):705-8. PubMed PMID: 3041593.

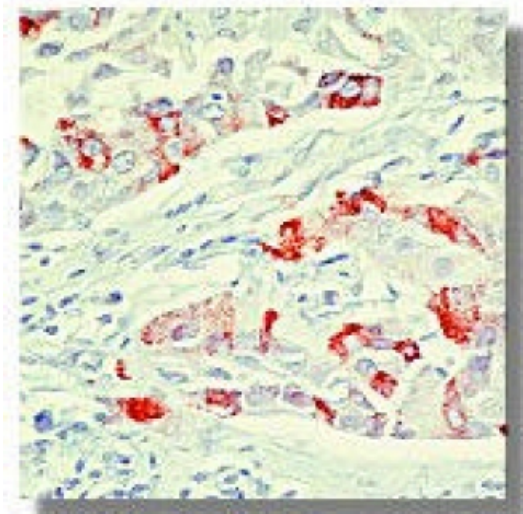
5. Rio MC, Bellocq JP, Gairard B, Rasmussen UB, Krust A, Koehl C, et al. Specific expression of the pS2 gene in subclasses of breast cancers in comparison with expression of the estrogen and progesterone receptors and the oncogene ERBB2. *Proc Natl Acad Sci U S A*. 1987 Dec;84(24):9243-7. PubMed PMID: 3321071.

6. Molina R, et al. Estrogen-inducible pS2 protein: Tumor characteristics and clinical behavior in breast cancer. *Proc Endocrine Soc* 61(#148), 1990.

7. Abbondanzo SL, et. al. Prognostic significance of immuno-cytochemically determined pS2 in axillary node-negative breast carcinoma. *Breast Cancer Res Treat* 16:182, 1990.

**Pictures:**

**Figure 1.** Immunohistochemical staining using PS2 Estrogen-Regulated Protein antibody (AM05313PU-N) on formalin fixed, paraffin embedded human breast carcinoma.



**For research and in vitro use only. Not for diagnostic or therapeutic work.**

Material Safety Datasheets are available at [www.acris-antibodies.com](http://www.acris-antibodies.com) or on request.

Antibody Hotline - Technical Questions - Antibody Location Service  
Free Call: 0800-2274746 (Germany only) - [www.acris-antibodies.com](http://www.acris-antibodies.com)