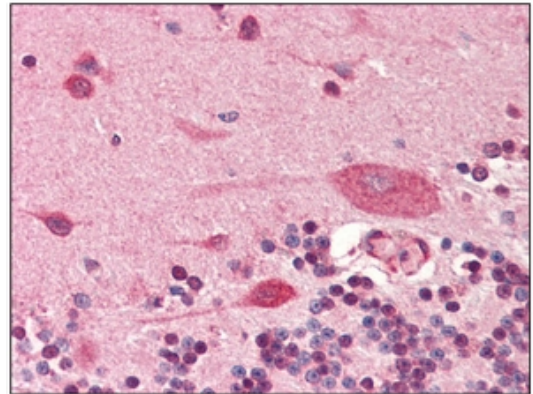


Monoclonal Antibody to Podoplanin (1-206) - Purified

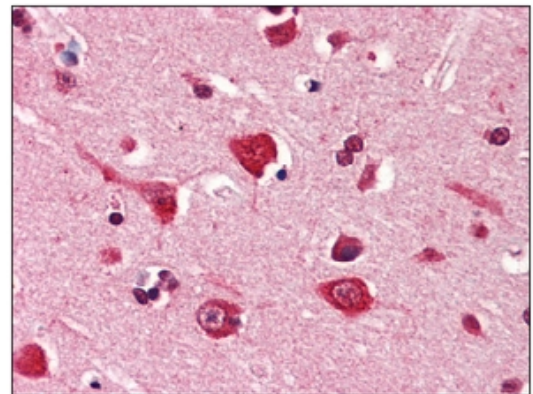
Alternate names:	Aggrus, GP36, Glycoprotein 36, PA2.26 antigen, PDPN, PSEC0003, PSEC0025, T1-alpha
Catalog No.:	AM03203PU-N
Quantity:	0.1 ml
Concentration:	1.0 mg/ml
Background:	Podoplanin (PDPN) is a small mucin-like transmembrane protein, widely expressed in various specialized cell types throughout the body. This is a type-I integral membrane glycoprotein with diverse distribution in human tissues. The physiological function of this protein may be related to its mucin-type character.
Uniprot ID:	Q86YL7
NCBI:	NP_001006625.1
GeneID:	10630
Host / Isotype:	Mouse / IgG2b
Clone:	5E2
Immunogen:	Recombinant Human Podoplanin/PDPN (1-206 aa) purified from <i>E. coli</i>
Format:	State: Liquid purified Ig fraction Purification: Protein-G affinity chromatography Buffer System: PBS, pH 7.4 containing 0.09% Sodium Azide
Applications:	ELISA. Western blot: 1/500-1/1000. Immunohistochemistry on Paraffin Sections: 5 µg/ml. Other applications not tested. Optimal dilutions are dependent on conditions and should be determined by the user.
Specificity:	This antibody detects Podoplanin.
Species Reactivity:	Tested: Human, Mouse.
Storage:	Store undiluted at 2-8°C for one month or (in aliquots) at -20°C for longer. Avoid repeated freezing and thawing. Shelf life: one year from despatch.
General Readings:	1. Wicki A., et al. (2006) Br J Cancer. 96(1):1-5.

Pictures:

Immunohistochemistry: AM03203PU-N Podoplanin antibody staining of Formalin-Fixed, Paraffin-Embedded Human Brain, Cerebellum at 5 µg/ml followed by biotinylated anti-mouse IgG secondary antibody, alkaline phosphatase-streptavidin and chromogen.



Immunohistochemistry: AM03203PU-N Podoplanin antibody staining of Formalin-Fixed, Paraffin-Embedded Human Brain, Cortex at 5 µg/ml followed by biotinylated anti-mouse IgG secondary antibody, alkaline phosphatase-streptavidin and chromogen.



Western blot analysis: Extracts of mouse kidney (50 µg) were resolved by SDS-PAGE, transferred to NC membrane and probed with anti-Human Podoplanin antibody (1/500). Proteins were visualized using a goat anti-mouse secondary antibody conjugated to HRP and an ECL detection system.

