

DESCRIPTION

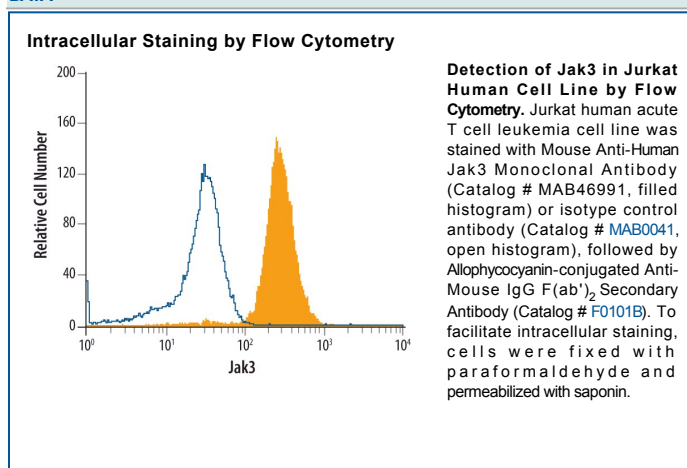
Species Reactivity	Human
Specificity	Detects human Jak3 in direct ELISAs.
Source	Monoclonal Mouse IgG _{2B} Clone # 452524
Purification	Protein A or G purified from hybridoma culture supernatant
Immunogen	<i>E. coli</i> -derived recombinant human Jak3 Gly46-Thr209 Accession # P52333
Formulation	Lyophilized from a 0.2 µm filtered solution in PBS with Trehalose. See Certificate of Analysis for details.

APPLICATIONS

Please Note: Optimal dilutions should be determined by each laboratory for each application. *General Protocols* are available in the *Technical Information* section on our website.

	Recommended Concentration	Sample
Intracellular Staining by Flow Cytometry	2.5 µg/10 ⁶ cells	See Below

DATA



PREPARATION AND STORAGE

Reconstitution	Reconstitute at 0.5 mg/mL in sterile PBS.
Shipping	The product is shipped at ambient temperature. Upon receipt, store it immediately at the temperature recommended below.
Stability & Storage	Use a manual defrost freezer and avoid repeated freeze-thaw cycles. <ul style="list-style-type: none"> ● 12 months from date of receipt, -20 to -70 °C as supplied. ● 1 month, 2 to 8 °C under sterile conditions after reconstitution. ● 6 months, -20 to -70 °C under sterile conditions after reconstitution.

BACKGROUND

Janus Kinase 3 (Jak3) belongs to the Jak family of protein tyrosine kinases that couple to cytokine receptors and are activated by ligand binding to these receptors. Also known as Leukocyte Janus Kinase (LJak), Jak3 is activated after binding to the gamma chain of Interleukin receptors, specifically the IL-2 and IL-4 receptors. Activation of Jak3 is associated with the rapid tyrosine phosphorylation of STAT proteins. Defects in Jak3 cause an autosomal severe combined immunodeficiency disease (SCID).