

DESCRIPTION

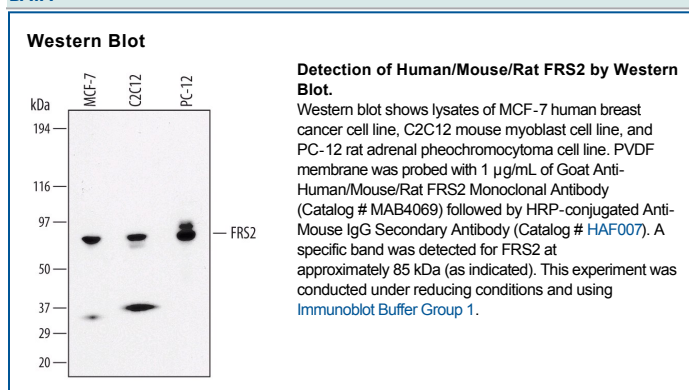
Species Reactivity	Human/Mouse/Rat
Specificity	Detects human, mouse, and rat FRS2 in Western blots.
Source	Monoclonal Mouse IgG _{2B} Clone # 462910
Purification	Protein A or G purified from hybridoma culture supernatant
Immunogen	<i>E. coli</i> -derived recombinant human FRS2 Asn121-Asn449 Accession # Q8WU20
Formulation	Lyophilized from a 0.2 µm filtered solution in PBS and NaCl with Trehalose. See Certificate of Analysis for details.

APPLICATIONS

Please Note: Optimal dilutions should be determined by each laboratory for each application. [General Protocols](#) are available in the [Technical Information](#) section on our website.

	Recommended Concentration	Sample
Western Blot	1 µg/mL	See Below

DATA



PREPARATION AND STORAGE

Reconstitution	Reconstitute at 0.5 mg/mL in sterile PBS.
Shipping	The product is shipped at ambient temperature. Upon receipt, store it immediately at the temperature recommended below.
Stability & Storage	<p>Use a manual defrost freezer and avoid repeated freeze-thaw cycles.</p> <ul style="list-style-type: none"> ● 12 months from date of receipt, -20 to -70 °C as supplied. ● 1 month, 2 to 8 °C under sterile conditions after reconstitution. ● 6 months, -20 to -70 °C under sterile conditions after reconstitution.

BACKGROUND

FRS2 (FGF R substrate 2; also known as SNT and FRS2α) is a 70-90 kDa member of the FRS family of lipid-anchored docking proteins. It is an intermediary between FGF R and other RTK receptors and their Ras/MAPK signaling cascades. FRS2 contains a membrane-anchoring myristoylation signal (aa 1-6), a PTB domain (aa 13-115) that interacts with FGF and NGF receptors, and a C-terminal Tyr-rich region (aa 196-471) that serves as a docking site for GRB-2 and SHP-2.