

# Monoclonal Anti-human Chondrolectin Antibody

## ORDERING INFORMATION

**Catalog Number:** MAB2576

**Clone:** 396305

**Lot Number:** ZNW01

**Size:** 100 µg

**Formulation:** 0.2 µm filtered solution in PBS with 5% trehalose

**Storage:** -20° C

**Reconstitution:** sterile PBS

**Specificity:** human CHODL

**Immunogen:** NS0-derived rhCHODL extracellular domain

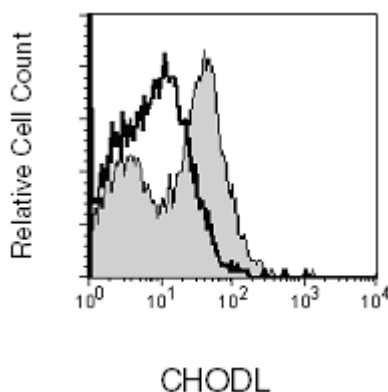
**Ig class:** mouse IgG<sub>2b</sub>

### Recommended Applications:

Western blot  
Flow cytometry  
Immunocytochemistry

### Other Application:

Direct ELISA



PC-3 cells were stained with anti-CHODL (R&D Systems, Cat. # MAB2576) or isotype control (R&D Systems, Cat. # MAB0041, open histogram) followed by APC-conjugated anti-mouse antibody (R&D Systems, Cat. # F0101B).

## Background

Chondrolectin (CHODL) is a 36 kDa type I transmembrane protein containing a C-type lectin carbohydrate recognition domain. Multiple isoforms of human CHODL are generated as a result of alternative promoter usage and/or alternative splicing. Some isoforms are differentially expressed during T cell development. Human and mouse CHODL share 94% amino acid sequence identity in their extracellular region.

## Preparation

This antibody was produced from a hybridoma resulting from the fusion of a mouse myeloma with B cells obtained from a mouse immunized with purified, NS0-derived, recombinant human CHODL (rhCHODL; aa 22 - 216; Accession # Q9H9P2) extracellular domain. The IgG fraction of the tissue culture supernatant was purified by Protein G affinity chromatography.

## Formulation

Lyophilized from a 0.2 µm filtered solution in phosphate-buffered saline (PBS) with 5% trehalose.

## Reconstitution

Reconstitute with sterile PBS. If 0.2 mL of PBS is used, the antibody concentration will be 500 µg/mL.

## Storage

Lyophilized samples are stable for twelve months from date of receipt when stored at -20° C to -70° C. Upon reconstitution, the antibody can be stored at 2° - 8° C for 1 month without detectable loss of activity. Reconstituted antibody can also be aliquotted and stored frozen at -20° C to -70° C in a manual defrost freezer for six months without detectable loss of activity. **Avoid repeated freeze-thaw cycles.**

## Specificity

This antibody detects rhCHODL in direct ELISAs and Western blots.

## Applications

**Western blot** - This antibody can be used at 1 - 2 µg/mL with the appropriate secondary reagents to detect human CHODL. Using a colorimetric detection system, the detection limit for rhCHODL is approximately 5 ng/lane under non-reducing and reducing conditions. Chemiluminescent detection with WesternGlo™ Chemiluminescent Detection Substrate (R&D Systems, Catalog # AR004) will increase sensitivity by 5 to 50 fold.

**Flow cytometry**- This antibody was validated for flow cytometry using PC-3 cells. Dilute this antibody to 25 µg/mL and add 10 µL of the diluted solution to 1 - 2.5 x 10<sup>5</sup> cells in a total reaction volume not exceeding 200 µL. The binding of unlabeled monoclonal antibodies may be visualized by adding a secondary developing reagent such as goat anti-mouse IgG conjugated to a fluorochrome.

**Immunocytochemistry** - This antibody was used at a concentration of 10 µg/mL to detect CHODL in PC-3 cells. Cells were fixed with PBS containing 4% paraformaldehyde and blocked with PBS containing 10% normal donkey serum, 0.1% Triton X-100, and 1% BSA. After blocking, cells were incubated with diluted primary antibody followed by NL557-coupled anti-mouse IgG in the dark. Between each step, cells were washed with PBS containing BSA.

**Direct ELISA** - This antibody can be used at 0.5 - 1.0 µg/mL with the appropriate secondary reagents to detect human CHODL. The detection limit for rhCHODL is approximately 2 ng/well.

**Optimal dilutions should be determined by each laboratory for each application.**