

# Monoclonal Anti-mouse F4/80/EMR1-Phycoerythrin

Catalog Number: FAB5580P

Lot Number: ABGQ01

100 Tests

## Reagents Provided

### Phycoerythrin (PE)-conjugated rat monoclonal anti-mouse

**F4/80/EMR1:** Supplied as 25 µg of antibody in 1 mL saline containing up to 0.5% BSA and 0.1% sodium azide.

**Clone #:** 521204

**Isotype:** rat IgG<sub>2A</sub>

## Reagents Not Provided

- Flow Cytometry Staining Buffer (Catalog # FC001) or other BSA-supplemented saline buffer.

## Storage

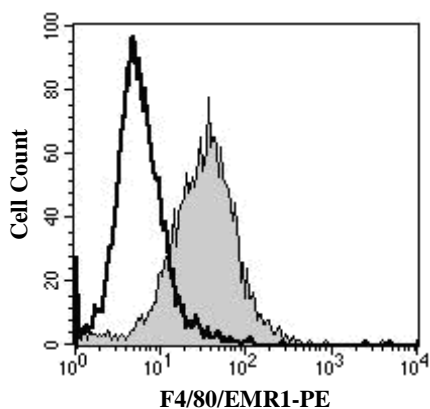
Reagents are stable for **twelve months** from the date of receipt when stored in the dark at 2° - 8° C.

## Intended Use

Designed to quantitatively determine the percentage of cells bearing F4/80/EMR1 within a population and qualitatively determine the density of F4/80/EMR1 on cell surfaces by flow cytometry.

## Product Description

This antibody was produced from a hybridoma resulting from the fusion of a mouse myeloma with B cells obtained from a rat immunized with transfected NS0 cells expressing mouse F4/80/EMR1 (rmEMR1; Accession # Q61549). The IgG fraction of the tissue culture supernatant was purified by Protein G affinity chromatography. The purified antibody was then conjugated to PE fluorochrome. Cell surface expression of F4/80/EMR1 is determined by flow cytometry using 488 nm wavelength excitation and monitoring emitted fluorescence with a detector optimized to collect peak emissions at 565 - 605 nm.



RAW264.7 cells were stained with PE-conjugated anti-mouse F4/80/EMR1 (Catalog # FAB5580P, filled histogram) or PE-conjugated isotype control (Catalog # IC006P, open histogram).

## Background Information

F4/80, also known as EMR1, is a 160 kDa extensively glycosylated, seven transmembrane protein of the EGF family of adhesion molecules. It is primarily expressed on macrophages and dendritic cells in mouse but is restricted to eosinophils in human. EMR1 plays a role in the development of peripheral tolerance. Within the ECD, mouse EMR1 shares 57% and 87% amino acid sequence identity with human and rat EMR1, respectively.

## Flow Cytometry Validation

This antibody has been tested for flow cytometry using RAW264.7 cells.

- Cells may be Fc-blocked with 1 µg of mouse IgG/10<sup>5</sup> cells for 15 minutes at room temperature. Do not wash excess blocking IgG from this reaction.
- After blocking, 10 µL of conjugated antibody was added to up to 1 x 10<sup>6</sup> cells and incubated for 30 minutes at room temperature.
- Unbound antibody was removed by washing the cells twice in Flow Cytometry Staining Buffer (Catalog # FC001). Note that whole blood requires a RBC lysis step at this point using Flow Cytometry Mouse Lyse Buffer (Catalog # FC003).
- The cells were resuspended in Flow Cytometry Staining Buffer for final flow cytometric analysis. As a control for this analysis, cells in a separate tube should be treated with PE-labeled rat IgG<sub>2A</sub> antibody. This procedure may need to be modified, depending upon the cell type and final utilization. Individual users may need to titrate to determine the optimal reagent amount for their specific use.

**Warning:** Contains sodium azide as a preservative - sodium azide may react with lead and copper plumbing to form explosive metal azides. Flush with large volumes of water during disposal.

FOR RESEARCH USE ONLY. NOT FOR USE IN HUMANS.

**R&D Systems Inc.**  
**1-800-343-7475**