

Monoclonal Anti-human Dectin-2/CLEC6A-Phycoerythrin

Catalog Number: FAB3114P

Lot Number: ABFE01

100 Tests

Reagents Provided

Phycoerythrin (PE)-conjugated mouse monoclonal anti-human

Dectin-2/CLEC6A: Supplied as 25 µg of antibody in 1 mL saline containing up to 0.5% BSA and 0.1% sodium azide.

Clone #: 545943

Isotype: mouse IgG₁

Reagents Not Provided

- Flow Cytometry Staining Buffer (Catalog # FC001) or other BSA-supplemented saline buffer.

Storage

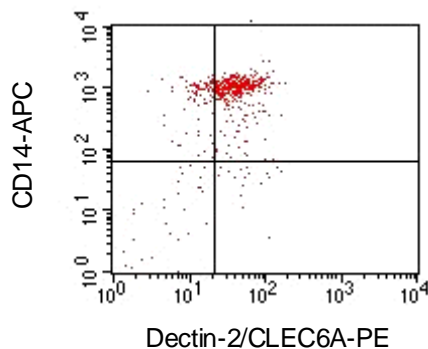
Reagents are stable for **twelve months** from the date of receipt when stored in the dark at 2° - 8° C.

Intended Use

Designed to quantitatively determine the percentage of cells bearing Dectin-2/CLEC6A within a population and qualitatively determine the density of Dectin-2/CLEC6A on cell surfaces by flow cytometry.

Product Description

This antibody was produced from a hybridoma resulting from the fusion of a mouse myeloma with B cells obtained from a mouse immunized with purified, NS0-derived, recombinant human Dectin-2 (rhDectin-2; aa 46 - 209; Accession # Q6EIG7). The IgG fraction of the tissue culture supernatant was purified by Protein G affinity chromatography. The purified antibody was then conjugated to PE fluorochrome. Cell surface expression of Dectin-2/CLEC6A is determined by flow cytometry using 488 nm wavelength excitation and monitoring emitted fluorescence with a detector optimized to collect peak emissions at 565 - 605 nm.



PBMC monocytes were stained with PE-conjugated anti-human Dectin-2/CLEC6A (Catalog # FAB3114P) and APC-conjugated anti-human CD14 (Catalog # FAB3832A). Quadrant markers were set based on isotype controls (Catalog # IC002P and IC002A).

Background Information

Dectin-2, also known as CLEC6A, is a type II transmembrane protein belonging to the C-Type lectin superfamily that is expressed on dendritic cells, Langerhans cells, monocytes, B cells, and activated T cells. Dectin-2 contains one carbohydrate recognition domain (CRD). Within the extracellular domain, human Dectin-2 shares 71% amino acid sequence identity with the mouse Dectin-2 α isoform.

Flow Cytometry Validation

This antibody has been tested for flow cytometry using PBMC monocytes.

- Cells may be Fc-blocked with 1 µg of human IgG/10⁵ cells for 15 minutes at room temperature. Do not wash excess blocking IgG from this reaction.
- After blocking, 10 µL of conjugated antibody was added to up to 1 x 10⁶ cells and incubated for 30 minutes at room temperature.
- Unbound antibody was removed by washing the cells twice in Flow Cytometry Staining Buffer (Catalog # FC001). Note that whole blood requires a RBC lysis step at this point using Flow Cytometry Human Lyse Buffer (Catalog # FC002).
- The cells were resuspended in Flow Cytometry Staining Buffer for final flow cytometric analysis. As a control for this analysis, cells in a separate tube should be treated with PE-labeled mouse IgG₁ antibody. This procedure may need to be modified, depending upon the cell type and final utilization. Individual users may need to titrate to determine the optimal reagent amount for their specific use.

Warning: Contains sodium azide as a preservative - sodium azide may react with lead and copper plumbing to form explosive metal azides. Flush with large volumes of water during disposal.