

Reagents Provided

Allophycocyanin (APC)-conjugated mouse monoclonal anti-human KIR2DS4: Supplied as 25 µg of antibody in 1 mL PBS containing 0.1% sodium azide.

Clone #: 179315

Isotype: mouse IgG_{2A}

Reagents Not Provided

- PBS (Dulbecco's PBS)
- BSA

Storage

Reagents are stable for **twelve months** from date of receipt when stored in the dark at 2° - 8° C.

Intended Use

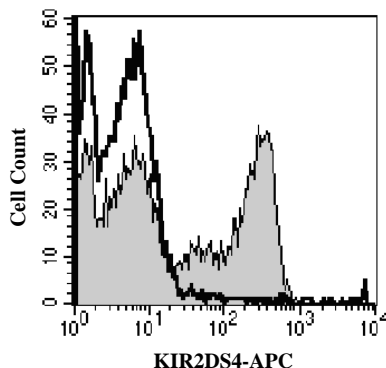
Designed to quantitatively determine the percentage of cells bearing KIR2DS4 within a population and qualitatively determine the density of KIR2DS4 on cell surfaces by flow cytometry.

Principle of the Test

Washed cells are incubated with the allophycocyanin-labeled monoclonal antibody, which binds to cells expressing KIR2DS4. Unbound allophycocyanin-conjugated antibody is then washed from the cells. Cells expressing KIR2DS4 are fluorescently stained, with the intensity of staining directly proportional to the density of expression of KIR2DS4. Cell surface expression of KIR2DS4 is determined by flow cytometric analysis using 620 - 650 nm wavelength laser excitation and monitoring emitted fluorescence with a detector optimized to collect peak emissions at 660 - 670 nm.

Reagent Preparation

Allophycocyanin-conjugated mouse anti-human KIR2DS4: Use as is; no preparation necessary.



Human blood-derived CD56⁺ NK cells were stained with APC-conjugated anti-human KIR2DS4 antibody (Catalog # FAB1847A, filled histogram) or isotype control (Catalog # IC003A, open histogram).

試薬に関するお問い合わせ先: R&D SYSTEMS 株式会社
e-mail: reagent@funakoshi.co.jp

2007/12/06

FOR RESEARCH USE ONLY. NOT FOR USE IN HUMANS.

Sample Preparation

Peripheral blood cells: Whole blood should be collected in evacuated tubes containing EDTA or heparin as the anticoagulant. Contaminating serum components should be removed by washing the cells three times in an isotonic phosphate buffer (supplemented with 0.5% BSA) by centrifugation at 500 x g for 5 minutes. Transfer 50 µL of packed cells to a 5 mL tube for staining with the monoclonal antibody. Whole blood will require lysis of RBC following the staining procedure.

Cell Cultures: Continuous cell lines or activated cell cultures should be centrifuged at 500 x g for 5 minutes and washed three times in an isotonic PBS buffer (supplemented with 0.5% BSA), as described above, to remove any residual growth factors that may be present in the culture medium. Cells should then be resuspended in the same buffer to a final concentration of 4 x 10⁶ cells/mL and 25 µL of cells (1 x 10⁵) transferred to a 5 mL tube for staining.

Note: Adherent cell lines may require pretreatment with 0.5 mM EDTA to facilitate removal from substrate. Cells that require trypsinization to enable removal from substrate should be further incubated in medium for 6 - 10 hours on a rocker platform to enable regeneration of the receptors. The use of the rocker platform will prevent reattachment to the substrate.

Sample Staining

- 1) Cells should be Fc-blocked by treatment with 1 µg of human IgG/10⁵ cells for 15 minutes at room temperature prior to staining. Do not wash excess blocking IgG from this reaction.
- 2) Transfer 25 µL of the Fc-blocked cells (1 x 10⁵ cells) or 50 µL of packed whole blood to a 5 mL tube.
- 3) Add 10 µL of APC-conjugated KIR2DS4 reagent.
- 4) Incubate for 30 - 45 minutes at 2° - 8° C.
- 5) Following this incubation, remove unreacted KIR2DS4 reagent by washing the cells twice in 4 mL of the same PBS buffer (*note: whole blood will require an RBC lysis step at this point using any commercially available lysing reagent, such as R&D Systems Whole Blood Lysing Kit, Catalog # WL1000*).
- 6) Finally, resuspend the cells in 200 - 400 µL of PBS buffer for final flow cytometric analysis.
- 7) As a control for analysis, cells in a separate tube should be treated with APC-labeled mouse IgG_{2A} antibody.

This procedure may need modification, depending upon final utilization.

Background Information

KIR2DS4 is an activating immunoglobulin-like receptor expressed on NK cells and some T cells. It has been implicated in the recognition of some HLA-C alleles.¹ A deletion variant encoding a single domain secreted isoform of KIR2DS4 has also been described.²

References

1. Katz, G. *et al.*, 2001, J. Immunol. **166**:7260 - 7267.
2. Maxwell, L. *et al.*, 2002, Tissue Antigens **60**:254 - 258.

Warning: Contains sodium azide as a preservative - sodium azide may react with lead and copper plumbing to form explosive metal azides. Flush with large volumes of water during disposal.