

DESCRIPTION

| | |
|---------------------------|---|
| Species Reactivity | Human |
| Specificity | Detects human Twist-2 in direct ELISAs. In direct ELISAs, less than 5% cross-reactivity with recombinant human Twist-1 is observed. |
| Source | Polyclonal Sheep IgG |
| Purification | Antigen Affinity-purified |
| Immunogen | <i>E. coli</i> -derived recombinant human Twist-2 Met1-Ser159 Accession # Q8WVJ9 |
| Formulation | Lyophilized from a 0.2 µm filtered solution in PBS with Trehalose. See Certificate of Analysis for details. |

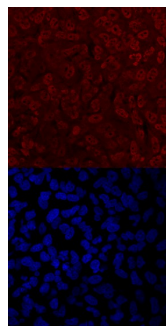
APPLICATIONS

Please Note: Optimal dilutions should be determined by each laboratory for each application. [General Protocols](#) are available in the [Technical Information](#) section on our website.

| | Recommended Concentration | Sample |
|----------------------------|----------------------------------|---------------|
| Immunocytochemistry | 5-15 µg/mL | See Below |

DATA

Immunocytochemistry



Twist-2 in A549 Human Cell Line. Twist-2 was detected in immersion fixed A549 human lung carcinoma cells treated with Recombinant Human TGF-β 1 (Catalog # [240-B](#)) using Human Twist-2 Antigen Affinity-purified Polyclonal Antibody (Catalog # AF6249) at 10 µg/mL for 3 hours at room temperature. Cells were stained using the NorthernLights™ 557-conjugated Anti-Sheep IgG Secondary Antibody (red, upper panel; Catalog # [NL010](#)) and counterstained with DAPI (blue, lower panel). Specific staining was localized to nuclei and cytoplasm. View our protocol for [Fluorescent ICC Staining of Cells on Coverslips](#).

PREPARATION AND STORAGE

| | |
|--------------------------------|--|
| Reconstitution | Sterile PBS to a final concentration of 0.2 mg/mL. |
| Shipping | The product is shipped at ambient temperature. Upon receipt, store it immediately at the temperature recommended below. |
| Stability & Storage | Use a manual defrost freezer and avoid repeated freeze-thaw cycles. <ul style="list-style-type: none"> ● 12 months from date of receipt, -20 to -70 °C as supplied. ● 1 month from date of receipt, 2 to 8 °C, reconstituted. ● 6 months from date of receipt, -20 to -70 °C, reconstituted. |

BACKGROUND

Twist-2 (Twist-related protein 2; also Dermo-1 and bHLHa39) is a 19-20 kDa Class B member of the bHLH transcription factor family of proteins. It is expressed in embryonic mesodermal and ectodermal derivatives, and is widely expressed in adult cells, including preosteoblasts, gastric chief cells, preadipocytes and myeloid progenitor cells. Twist-2 is a transcriptional repressor that heterodimerizes with multiple partners such as E12, SREBP1 and MEF2. Human Twist-2 is 160 amino acids (aa) in length. It contains a bHLH domain (aa 65-122) with an embedded DNA-binding motif. Full length human Twist-2 shares 82% and 99% aa identity with human Twist-1 and mouse Twist-2, respectively.