

## Anti-human F-box protein 15/FBXO15 Antibody

### ORDERING INFORMATION

**Catalog Number:** AF6035

**Lot Number:** CDQC01

**Size:** 100 µg

**Formulation:** 0.2 µm filtered solution in PBS with 5% trehalose

**Storage:** -20° C

**Reconstitution:** sterile PBS

**Specificity:** human FBXO15

**Immunogen:** *E. coli*-derived rhFBXO15 (aa 298 - 434)

**Ig Type:** sheep IgG

**Applications:** Western blot  
Direct ELISA

### Background

FBXO15 (F-box only protein 15; also FBX15) is a 50 - 60 kDa member of the F-box family, O-subfamily of molecules that is most closely related to FBXO8 and O11. It is found in pluripotent stem cells and testis tissue, and apparently serves as a substrate recognition component of the SCF-type E3 ubiquitin ligase. Human FBXO15 is 434 amino acids (aa) in length. It contains one F-box (aa 1 - 41) that likely serves as an interaction domain for SKP1. There are two potential isoforms, one that contains an alternative start site 76 aa upstream of the standard site, and a second that shows complex splicing that includes a 66 aa insertion after Asn35, a Ser substitution for aa 186 - 256, and a 106 aa substitution for aa 304 - 346. Over aa 298 - 434, human FBXO15 shares 53% aa identity with mouse FBXO15.

### Preparation

Produced in sheep immunized with purified, *E. coli*-derived, recombinant human F-box protein 15 (rhFBXO15; aa 298 - 434; Accession # NP\_689889). Human FBXO15 specific IgG was purified by human FBXO15 affinity chromatography.

### Formulation

Lyophilized from a 0.2 µm filtered solution in phosphate-buffered saline (PBS) with 5% trehalose.

### Reconstitution

Reconstitute with sterile PBS. If 0.5 mL of PBS is used, the antibody concentration will be 0.2 mg/mL.

### Storage

Lyophilized samples are stable for twelve months from date of receipt when stored at -20° C to -70° C. Upon reconstitution, the antibody can be stored at 2° - 8° C for 1 month without detectable loss of activity. Reconstituted antibody can also be aliquotted and stored frozen at -20° C to -70° C in a **manual defrost freezer** for six months without detectable loss of activity. **Avoid repeated freeze-thaw cycles.**

### Specificity

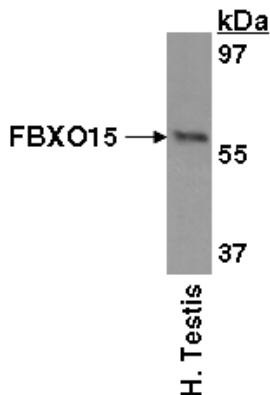
This antibody has been selected for its ability to recognize human FBXO15 in direct ELISAs and Western blots. In direct ELISAs, this antibody shows approximately 10% cross-reactivity with rmFBXO15.

### Applications

**Western blot** - An antibody concentration of 1.0 µg/mL is recommended.

**Direct ELISA** - This antibody can be used at 0.5 - 1.0 µg/mL with the appropriate secondary reagents to detect human FBXO15. The detection limit for rhFBXO15 is approximately 1 ng/well.

**Optimal dilutions should be determined by each laboratory for each application.**



### Detection of FBXO15 with AF6035.

Tissue lysates were resolved by SDS-PAGE, transferred to an Immobilon-P membrane and immunoblotted with 1.0 µg/mL sheep anti-hFBXO15.