

ORDERING INFORMATION

Catalog Number: AF5997

Lot Number: CDQG01

Size: 100 µg

Formulation: 0.2 µm filtered solution in PBS with 5% trehalose

Storage: -20° C

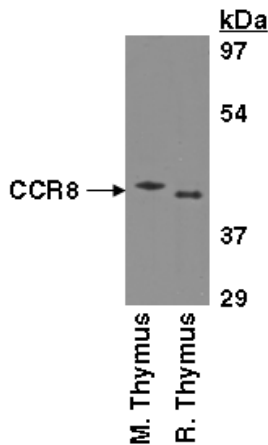
Reconstitution: sterile PBS

Specificity: mouse and rat CCR8

Immunogen: *E. coli*-derived rmCCR8 extracellular N-terminus and loops

Ig Type: sheep IgG

Applications: Western blot
Direct ELISA



Detection of CCR8 with AF5997.

Cell lysates were resolved by SDS-PAGE, transferred to an Immobilon-P membrane and immunoblotted with 0.5 µg/mL sheep anti-m/rCCR8.

Background

CCR8 (C-C chemokine receptor 8; also CD198) is a 41 - 43 kDa member of the GPCR #1 family of transmembrane proteins. Mouse CCR8 is expressed on vascular smooth muscle cells, monocytes, eosinophils, peritoneal macrophages, thymocytes, CD8+ T cells, Langerhans cells and neurons. CCL1/TCA3 and vMIP-1 are known agonists for CCR8. Mouse CCR8 is a 7-transmembrane protein that is 353 amino acids (aa) in length. It contains a 33 aa N-terminal extracellular domain plus a 50 aa C-terminal cytoplasmic tail. In mouse, CCR8 is N- and possibly O-glycosylated, and known to be sulfated on Tyr14 and 15. The unusual nature of these posttranslational modifications may lead to anomalous migration in SDS-Page. There are two potential isoforms, one that shows a deletion of aa 103 - 163, and another that shows a Met substitution for aa 125 - 166. Over aa sequences 1 - 33 and 92 - 105 collectively, mouse CCR8 shares 64% and 85% aa identity with human and rat CCR8, respectively.

Preparation

Produced in sheep immunized with purified, *E. coli*-derived, recombinant mouse CCR8 extracellular N-terminus and loops (rmCCR8; aa 1 - 33, 92 - 105, 170 - 200 and 262 - 278, joined by linker peptides; Accession # P56484). CCR8 specific IgG was purified by mouse CCR8 affinity chromatography.

Formulation

Lyophilized from a 0.2 µm filtered solution in phosphate-buffered saline (PBS) with 5% trehalose.

Reconstitution

Reconstitute with sterile PBS. If 0.5 mL of PBS is used, the antibody concentration will be 0.2 mg/mL.

Storage

Lyophilized samples are stable for twelve months from date of receipt when stored at -20° C to -70° C. Upon reconstitution, the antibody can be stored at 2° - 8° C for 1 month without detectable loss of activity. Reconstituted antibody can also be aliquotted and stored frozen at -20° C to -70° C **in a manual defrost freezer** for six months without detectable loss of activity. **Avoid repeated freeze-thaw cycles.**

Specificity

This antibody has been selected for its ability to recognize CCR8 in the applications listed below. In direct ELISAs, this antibody shows less than 2% cross-reactivity with rmCCR1, rmCCR4 and rmCCR5.

Applications

Western blot - An antibody concentration of 0.5 µg/mL is recommended.

Direct ELISA - This antibody can be used at 0.5 - 1.0 µg/mL with the appropriate secondary reagents to detect CCR8. The detection limit for rmCCR8 is approximately 0.3 ng/well.

Optimal dilutions should be determined by each laboratory for each application.