

#### DESCRIPTION

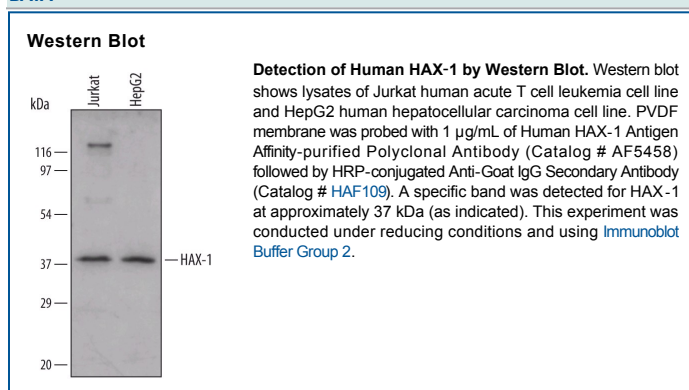
<b>Species Reactivity</b>	Human
<b>Specificity</b>	Detects endogenous human HAX-1 in Western blots.
<b>Source</b>	Polyclonal Goat IgG
<b>Purification</b>	Antigen Affinity-purified
<b>Immunogen</b>	<i>E. coli</i> -derived recombinant human HAX-1 Ser2-Leu261 Accession # O00165
<b>Formulation</b>	Lyophilized from a 0.2 µm filtered solution in PBS with Trehalose. See Certificate of Analysis for details.

#### APPLICATIONS

**Please Note:** Optimal dilutions should be determined by each laboratory for each application. *General Protocols* are available in the *Technical Information* section on our website.

	<b>Recommended Concentration</b>	<b>Sample</b>
<b>Western Blot</b>	1 µg/mL	See Below

#### DATA



#### PREPARATION AND STORAGE

<b>Reconstitution</b>	Reconstitute at 0.2 mg/mL in sterile PBS.
<b>Shipping</b>	The product is shipped at ambient temperature. Upon receipt, store it immediately at the temperature recommended below.
<b>Stability &amp; Storage</b>	<b>Use a manual defrost freezer and avoid repeated freeze-thaw cycles.</b> <ul style="list-style-type: none"> <li>● 12 months from date of receipt, -20 to -70 °C as supplied.</li> <li>● 1 month from date of receipt, 2 to 8 °C, reconstituted.</li> <li>● 6 months from date of receipt, -20 to -70 °C, reconstituted.</li> </ul>

#### BACKGROUND

HAX-1 (HCLS1-associated protein X-1; also HS1-binding protein1) is a 34-35 kDa intracellular protein with structural similarity to Bcl-2 family proteins. It is ubiquitously expressed, and participates in a variety of cell-specific functions. HAX-1 blocks cardiomyocyte apoptosis via caspase-9 inhibition, downregulates conjugated bile acid secretion via BSEP binding, and via PKD2, transmits integrin signals to the ER. Human HAX-1 is 279 amino acids (aa) in length and contains two Bcl-2 homology regions (aa 37-56 and 74-89), a PEST domain (aa 104-117) and a potential transmembrane segment (aa 261-279). HS-1 is found mostly in the mitochondria. HAX-1 is also cleaved by caspase-3 at Asp127. Over aa 2-261, human HAX-1 shares 81% aa identity with mouse HAX-1.