

Anti-human SALM4/LRFN3 Antibody

ORDERING INFORMATION

Catalog Number: AF5349

Lot Number: CBZW01

Size: 100 µg

Formulation: 0.2 µm filtered solution in PBS with 5% trehalose

Storage: -20° C

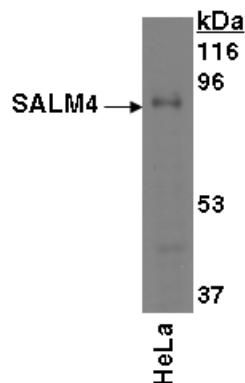
Reconstitution: sterile PBS

Specificity: human SALM4 extracellular domain

Immunogen: NS0-derived rhSALM4 extracellular domain

Ig Type: goat IgG

Applications: Western blot
Direct ELISA



Detection of SALM4 with AF5349.

Cell lysates were resolved by SDS-PAGE, transferred to an Immobilon-P membrane and immunoblotted with 1.0 µg/mL goat anti-hSALM4.

Background

SALM4 (Synaptic adhesion-like molecule 4; also LRFN-3) is a 85 - 105 kDa member of the LRFN family of proteins. Its mRNA is expressed in multiple organs, and it is known to be present on neuronal membranes. SALM4 is believed to form homophilic *trans*-associations during neurite outgrowth. Mature human SALM4 is a 612 amino acid (aa) type I transmembrane glycoprotein. It contains a 523 aa extracellular domain (ECD) (aa 17 - 539), plus a 67 aa cytoplasmic region that does not contain a PDZ-binding motif. The ECD contains six LRRs (aa 82 - 227), one Ig-like domain (aa 295 - 382), and a fibronectin type III repeat (aa 425 - 515). Over aa 17 - 539, human SALM4 shares 97% aa identity with mouse SALM4.

Preparation

Produced in goats immunized with purified, NS0-derived, recombinant human SALM4 extracellular domain (rhSALM4; Accession # Q9BTN0). Human SALM4 specific IgG was purified by human SALM4 affinity chromatography.

Formulation

Lyophilized from a 0.2 µm filtered solution in phosphate-buffered saline (PBS) with 5% trehalose.

Reconstitution

Reconstitute with sterile PBS. If 0.5 mL of PBS is used, the antibody concentration will be 0.2 mg/mL.

Storage

Lyophilized samples are stable for twelve months from date of receipt when stored at -20° C to -70° C. Upon reconstitution, the antibody can be stored at 2° - 8° C for 1 month without detectable loss of activity. Reconstituted antibody can also be aliquotted and stored frozen at -20° C to -70° C **in a manual defrost freezer** for six months without detectable loss of activity. **Avoid repeated freeze-thaw cycles.**

Specificity

This antibody has been selected for its ability to recognize human SALM4 in direct ELISAs and Western blots.

Applications

Western blot - An antibody concentration of 1.0 µg/mL is recommended.

Direct ELISA - This antibody can be used at 0.5 - 1.0 µg/mL with the appropriate secondary reagents to detect human SALM4. The detection limit for rhSALM4 is approximately 2 ng/well. In this format, this antibody shows less than 1% cross-reactivity with rhSALM3.

Optimal dilutions should be determined by each laboratory for each application.