

## ORDERING INFORMATION

**Catalog Number:** AF5319

**Lot Number:** CBWJ01

**Size:** 100 µg

**Formulation:** 0.2 µm filtered solution in PBS with 5% trehalose

**Storage:** -20° C

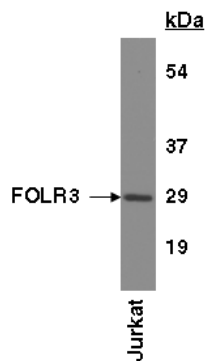
**Reconstitution:** sterile PBS

**Specificity:** human FOLR3

**Immunogen:** NS0-derived rhFOLR3 long isoform

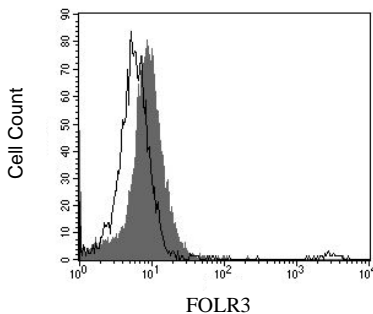
**Ig Type:** sheep IgG

**Applications:** Western blot  
Flow cytometry  
Direct ELISA



### Detection of FOLR3 with AF5319.

Cell lysates were resolved by SDS-PAGE, transferred to an Immobilon-P membrane and immunoblotted with 1.0 µg/mL sheep anti-hFOLR3.



KG-1 cells were stained with anti-FOLR3 (R&D Systems, Cat. # AF5319, filled histogram), or control antibody (R&D Systems, Cat. # 5-001-A, open histogram) followed by PE555-conjugated anti-sheep IgG (R&D Systems, Cat. # NL011).

## Background

FOLR3 (folate receptor 3; also FR-γ and FOLBP-3) is a 29 - 32 kDa, secreted member of the folate receptor family. Its function is unclear. Although folate family receptors can internalize folate, they are generally not the principal conduits for folate uptake. FOLR3 will bind folate in milk and blood, possibly stabilizing this molecule. Its levels are low, however, and it is best known as a potential marker for malignancy. Human FOLR3 precursor is 243 amino acids (aa) in length. It contains a 23 aa signal sequence and a 220 aa mature region. There are no definitive structural motifs. There is one isoform that shows a premature truncation after Leu104. This does not bind folate. A second isoform shows a 53 aa substitution for aa 1 - 105. No definitive mouse counterpart to human FOLR3 has been reported.

## Preparation

Produced in sheep immunized with purified, NS0-derived, recombinant human FOLR3 long isoform (rhFOLR3; aa 20 - 243; Accession # P41439). Human FOLR3 specific IgG was purified by human FOLR3 affinity chromatography.

## Formulation

Lyophilized from a 0.2 µm filtered solution in phosphate-buffered saline (PBS) with 5% trehalose.

## Reconstitution

Reconstitute with sterile PBS. If 0.5 mL of PBS is used, the antibody concentration will be 0.2 mg/mL.

## Storage

Lyophilized samples are stable for twelve months from date of receipt when stored at -20° C to -70° C. Upon reconstitution, the antibody can be stored at 2° - 8° C for 1 month without detectable loss of activity. Reconstituted antibody can also be aliquotted and stored frozen at -20° C to -70° C in a manual defrost freezer for six months without detectable loss of activity. **Avoid repeated freeze-thaw cycles.**

## Specificity

This antibody has been selected for its ability to recognize human FOLR3 in the applications listed below. In direct ELISAs, this antibody shows approximately 10% cross-reactivity with rhFOLR2 and less than 1% cross-reactivity with rhFOLR1.

## Applications

**Western blot** - An antibody concentration of 1.0 µg/mL is recommended.

**Flow cytometry** - This antibody was tested for flow cytometry using KG-1 cells (Shen, F., *et al.*, (1994) *Biochemistry* **33**:1209). Dilute this antibody to 25 µg/mL and add 10 µL of the diluted solution to 1 - 2.5 x 10<sup>5</sup> cells in a total reaction volume not exceeding 200 µL. The binding of unlabeled antibodies may be visualized by adding a secondary developing reagent such as anti-sheep IgG conjugated to a fluorochrome. Between steps, wash cells in Flow Cytometry Staining Buffer (R&D Systems, Cat. # FC002) or equivalent.

**Direct ELISA** - This antibody can be used at 0.5 - 1.0 µg/mL with the appropriate secondary reagents to detect human FOLR3. The detection limit for rhFOLR3 is approximately 0.2 ng/well.

**Optimal dilutions should be determined by each laboratory for each application.**

**R&D Systems, Inc.**  
**1-800-343-7475**

FOR RESEARCH USE ONLY. NOT FOR USE IN HUMANS.