

ORDERING INFORMATION

Catalog Number: AF5285

Lot Number: CAWI01

Size: 100 µg

Formulation: 0.2 µm filtered solution in PBS with 5% trehalose

Storage: -20° C

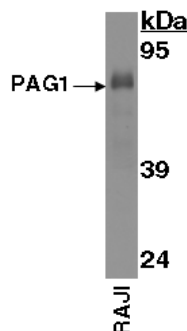
Reconstitution: sterile PBS

Specificity: human PAG1

Immunogen: *E. coli*-derived rhPAG1 (aa 38 - 432)

Ig Type: sheep IgG

Applications: Western blot
Direct ELISA



Detection of PAG1 with AF5285.

Cell lysates were resolved by SDS-PAGE, transferred to an Immobilon-P membrane and immunoblotted with 1.0 µg/mL sheep anti-hPAG1.

Background

PAG1 (Phosphoprotein-associated with glycosphingolipid-enriched microdomains 1; also Cbp/Csk-binding protein) is a 47 kDa protein that runs anomalously at 70 - 85 kDa in SDS-PAGE. PAG1 is a constitutively phosphorylated and palmitoylated protein that occurs in leukocyte lipid rafts. It negatively regulates Src family kinases by linking Csk to FynT. Human PAG1 is 432 amino acids (aa) in length. It is a type III (no signal sequence) transmembrane protein that contains a 16 aa extracellular region (aa 31 - 16) and a 395 aa cytoplasmic domain (aa 38 - 432). PAG1 is palmitoylated at Cys37 and phosphorylated at Tyr317 where it interacts with Csk. There is an FynT binding site at aa 131 - 137. One splice variant shows a 36 aa substitution for aa 293 - 432. Over aa 38 - 432, human PAG1 is 79% aa identical to mouse PAG1.

Preparation

Produced in sheep immunized with purified, *E. coli*-derived, recombinant human PAG1 (rhPAG1; aa 38 - 432; Accession # Q9NWX8). Human PAG1 specific IgG was purified by human PAG1 affinity chromatography.

Formulation

Lyophilized from a 0.2 µm filtered solution in phosphate-buffered saline (PBS) with 5% trehalose.

Reconstitution

Reconstitute with sterile PBS. If 0.5 mL of PBS is used, the antibody concentration will be 0.2 mg/mL.

Storage

Lyophilized samples are stable for twelve months from date of receipt when stored at -20° C to -70° C. Upon reconstitution, the antibody can be stored at 2° - 8° C for 1 month without detectable loss of activity. Reconstituted antibody can also be aliquotted and stored frozen at -20° C to -70° C in a manual defrost freezer for six months without detectable loss of activity. **Avoid repeated freeze-thaw cycles.**

Specificity

This antibody has been selected for its ability to recognize human PAG1 in direct ELISAs and Western blots.

Applications

Western blot - An antibody concentration of 1.0 µg/mL is recommended.

Direct ELISA - This antibody can be used at 0.5 - 1.0 µg/mL with the appropriate secondary reagents to detect human PAG1. The detection limit for rhPAG1 is approximately 1 ng/well.

Optimal dilutions should be determined by each laboratory for each application.