

ORDERING INFORMATION

Catalog Number: AF5060

Lot Number: CBIZ01

Size: 100 μ g

Formulation: 0.2 μ m filtered solution in PBS with 5% trehalose

Storage: -20° C

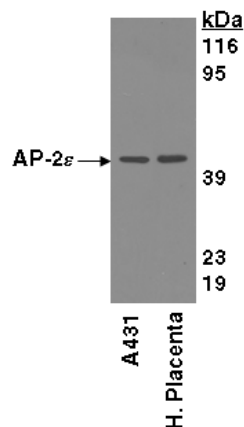
Reconstitution: sterile PBS

Specificity: human AP-2 ϵ

Immunogen: *E. coli*-derived rhAP-2 ϵ (aa 123 - 217)

Ig Type: goat IgG

Applications: Western blot
Direct ELISA



Detection of AP-2 ϵ with AF5060.

Cell and tissue lysates were resolved by SDS-PAGE, transferred to an Immobilon-P membrane and immunoblotted with 1.0 μ g/mL goat anti-hAP-2 ϵ .

Background

AP-2 ϵ (Activating protein 2 epsilon) is a 48 kDa member of the AP-2 transcription factor family. It is found in embryonic olfactory bulb mitral cells and adult keratinocytes and chondrocytes. In the nucleus, it presumably forms homodimers and heterodimers with other AP-2 family members. Human AP-2 ϵ is 442 amino acids in length. It contains a Gln/Pro-rich transactivation domain (aa 22 - 122), a DNA binding domain (aa 216 - 286) and an AP-2, helix-span-helix dimerization region (aa 287 - 417). There is one potential alternate start site at Met09. Over aa 123 - 217, human AP-2 ϵ shares 86% aa identity with mouse AP-2 ϵ .

Preparation

Produced in goats immunized with purified, *E. coli*-derived, recombinant human AP-2 ϵ (rhAP-2 ϵ ; aa 123 - 217; Accession # Q6VUC0). Human AP-2 ϵ specific IgG was purified by human AP-2 ϵ affinity chromatography.

Formulation

Lyophilized from a 0.2 μ m filtered solution in phosphate-buffered saline (PBS) with 5% trehalose.

Reconstitution

Reconstitute with sterile PBS. If 0.5 mL of PBS is used, the antibody concentration will be 0.2 mg/mL.

Storage

Lyophilized samples are stable for twelve months from date of receipt when stored at -20° C to -70° C. Upon reconstitution, the antibody can be stored at 2° - 8° C for 1 month without detectable loss of activity. Reconstituted antibody can also be aliquotted and stored frozen at -20° C to -70° C in a **manual defrost freezer** for six months without detectable loss of activity. **Avoid repeated freeze-thaw cycles.**

Specificity

This antibody has been selected for its ability to recognize human AP-2 ϵ in direct ELISAs and Western blots.

Applications

Western blot - An antibody concentration of 1.0 μ g/mL is recommended.

Direct ELISA - This antibody can be used at 0.5 - 1.0 μ g/mL with the appropriate secondary reagents to detect human AP-2 ϵ . The detection limit for rhAP-2 ϵ is approximately 0.1 ng/well. In this format, this antibody shows less than 5% cross-reactivity with rhAP-2 α , rhAP-2 β , rhAP-2 δ and rhAP-2 γ .

Optimal dilutions should be determined by each laboratory for each application.