



Anti-human Plexin B3 Antibody

ORDERING INFORMATION

Catalog Number: AF4958

Lot Number: CCK01

Size: 100 µg

Formulation: 0.2 µm filtered solution in PBS with 5% trehalose

Storage: -20° C

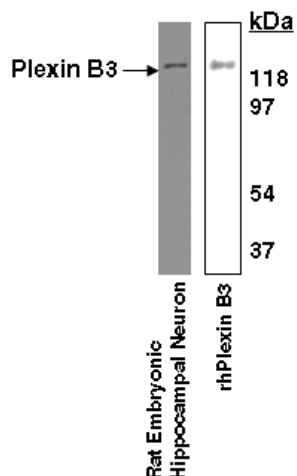
Reconstitution: sterile PBS

Specificity: human Plexin B3 extracellular domain

Immunogen: CHO cell-derived rhPlexin B3 extracellular domain

Ig Type: sheep IgG

Applications: Western blot
Direct ELISA



Detection of Plexin B3 with AF4958.

Cell lysates and rhPlexin B3 were resolved by SDS-PAGE, transferred to an Immobilon-P membrane and immunoblotted with 1.0 µg/mL sheep anti-hPlexin B3.

Preparation

Produced in sheep immunized with purified, CHO cell-derived, recombinant human Plexin B3 (rhPlexin B3; R&D Systems, Catalog # 4958-PC). Human Plexin B3 specific IgG was purified by human Plexin B3 affinity chromatography.

Formulation

Lyophilized from a 0.2 µm filtered solution in phosphate-buffered saline (PBS) with 5% trehalose.

Reconstitution

Reconstitute with sterile PBS. If 0.5 mL of PBS is used, the antibody concentration will be 0.2 mg/mL.

Storage

Lyophilized samples are stable for twelve months from date of receipt when stored at -20° C to -70° C. Upon reconstitution, the antibody can be stored at 2° - 8° C for 1 month without detectable loss of activity. Reconstituted antibody can also be aliquotted and stored frozen at -20° C to -70° C in a **manual defrost freezer** for six months without detectable loss of activity. **Avoid repeated freeze-thaw cycles.**

Specificity

This antibody has been selected for its ability to recognize human Plexin B3 in the applications listed below. In direct ELISAs, this antibody shows approximately 40% cross-reactivity with rmPlexin B3.

Applications

Western blot - An antibody concentration of 1.0 µg/mL is recommended.

Immunohistochemistry - This antibody will detect human Plexin B3 in cells and tissues. The working dilution is 10 µg/mL. Antigen retrieval is recommended.

Direct ELISA - This antibody can be used at 0.5 - 1.0 µg/mL with the appropriate secondary reagents to detect human Plexin B3. The detection limit for rhPlexin B3 is approximately 0.2 ng/well.

Optimal dilutions should be determined by each laboratory for each application.