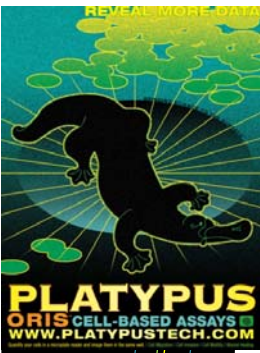


Reveal Data Never Seen Before ...



New Oris™ Cell Migration Assay – TriCoated

evaluate cell migration on three different surfaces

Cell migration plays a vital role in wound healing, cancer metastases and regenerative medicine. Optimizing conditions for conducting cell migration studies can be costly and time consuming. The new Oris™ Cell Migration Assay - TriCoated combines three kits into one for evaluating the best surface coating for your cell migration application.

Product Features

- **More Data Per Well** – Analyze cells treated with multiple fluorescent probes, labels or stains by using a microplate reader, microscope or high content imaging system.
- **Reproducible Results** – Achieve lower well-to-well CV's with the unique Oris™ assay design than with scratch assays.
- **Reduced Evaluation Costs** – Compare cell migration on three different surfaces all on the same microplate.
- **Real-Time Monitoring** – Track changes in cell movement and morphology as migration progresses.
- **Membrane-Free Cell Migration** – Observe cells directly without cumbersome cell culture inserts or transmembrane devices; compatible with HTS and HCS applications.

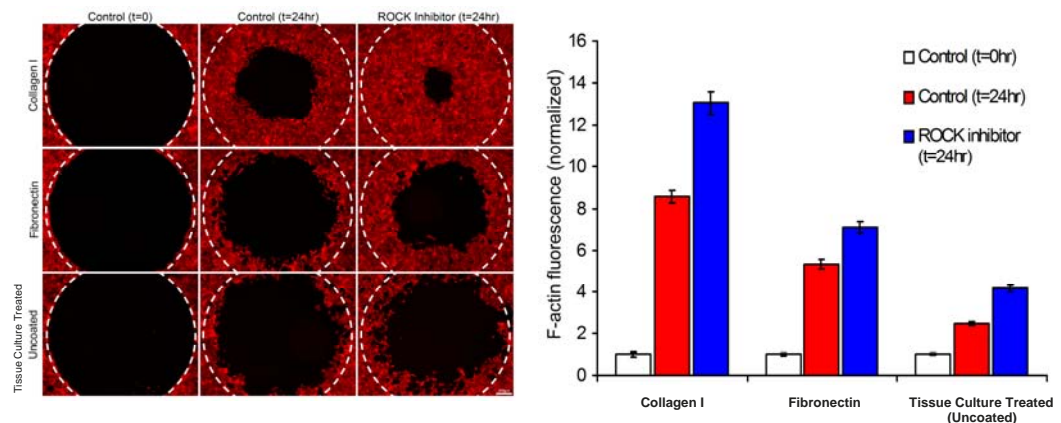


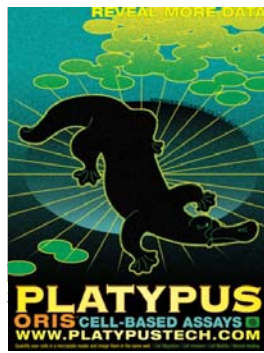
Figure 1. NMuMG Mouse Breast Epithelial Cell Migration with the Oris™ Cell Migration Assay – TriCoated: NMuMG cells were seeded at 20,000 cells/well and allowed to attach overnight. After stopper removal, a ROCK inhibitor (2.5 μ M H-1152) was added and migration proceeded for 24 hours. Following migration, cells were fixed and filamentous actin (F-actin) was stained with TRITC-labeled phalloidin. Migration was quantified by measuring fluorescence intensity of the TRITC labeled cells in the detection zone using a microplate reader (n=12), as shown in the graph above. Quantitative data confirmed by complementary microscopic images of representative wells.

Data courtesy of Drs. Scott Gehler and Patricia Keely, University of Wisconsin – Madison.

Platypus
Technologies

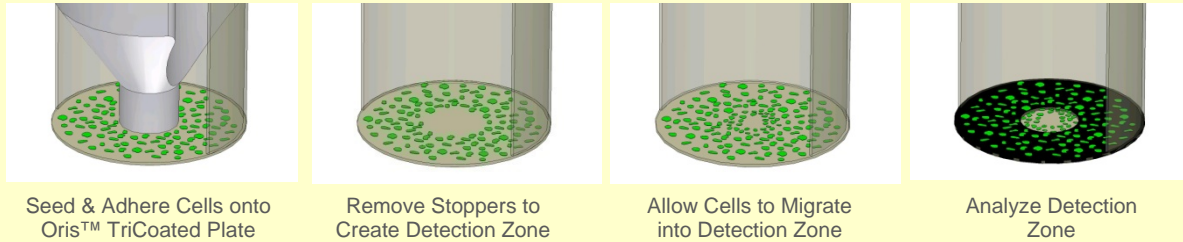
5520 Nobel Drive, Suite 100
Madison, WI 53711
Toll Free: 866.296.4455
Phone: 608.237.1270
Fax: 608.237.1271
www.platypustech.com

PLATYPUS
TECHNOLOGIES



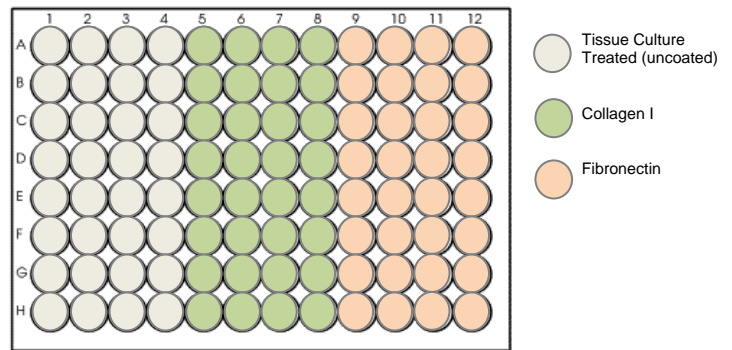
Oris™ Cell Migration Assay – TriCoated

Oris™ TriCoated Assay Steps



Oris™ TriCoated Plate Coatings

The Oris™ Cell Migration Assay - TriCoated offers three surfaces (Tissue Culture Treated, Collagen I, and Fibronectin) on a single 96-well microplate to image, quantify, and compare cell migration conditions. The Oris™ TriCoated assay utilizes patent pending Oris™ Cell Seeding Stoppers to create a 2 mm diameter detection zone in the center of each well. After cells adhere to the surface around the stopper tip, the stoppers are removed. Cells are then able to migrate into the detection zone and be analyzed.



Product Listing

PROD. NO.	DESCRIPTION*	SIZE
CMATR1.101	Oris™ Cell Migration Assay – TriCoated with 32 Tissue Culture Treated wells, 32 Collagen I wells, and 32 Fibronectin wells	1- pack
CMATR5.101	Oris™ Cell Migration Assay – TriCoated with 32 Tissue Culture Treated wells, 32 Collagen I wells, and 32 Fibronectin wells	5-pack
CMA1.101	Oris™ Cell Migration Assay – Tissue Culture Treated	1- pack
CMA5.101	Oris™ Cell Migration Assay – Tissue Culture Treated	5-pack
CMACC1.101	Oris™ Cell Migration Assay - Collagen I Coated	1- pack
CMACC5.101	Oris™ Cell Migration Assay - Collagen I Coated	5-pack
CMAFN1.101	Oris™ Cell Migration Assay - Fibronectin Coated	1- pack
CMAFN5.101	Oris™ Cell Migration Assay - Fibronectin Coated	5-pack

* All Oris™ Cell Migration Kits are supplied with one Oris™ Detection Mask, one Oris™ Stopper Tool, and either one or five Oris™ microplates populated with Oris™ Cell Seeding Stoppers.

Additional Oris™ Cell-Based Assays and instructional videos are available at www.platypustech.com.



ORIS™ CELL MIGRATION ASSAY
- TRICOATED