

NBP1-36727SS**Sulfatase 2 Antibody (2B4)****Unit Size**

0.025 ml

Concentration

1.0 mg/ml

Storage

Store at 4C short term. Aliquot and store at -20C long term. Avoid freeze-thaw cycles.

Applications

ELISA, IHC-P, IP, WB

Species

Human, Mouse

Host

Mouse

Clonality

Monoclonal

Isotype

IgG1

Purity

Protein G purified

Preservative

0.05% Sodium Azide

Specificity/Sensitivity

This Sulfatase 2 antibody does not recognize human or mouse Sulfatase 1 or other family members.

Immunogen

Partial recombinant human Sulfatase 2 isoform b [Accession# NP_940998]

Recommended Dilutions

ELISA, Immunohistochemistry-Paraffin 1:250 - 1:500, immunoprecipitation, Western Blot 1:1000

Buffer

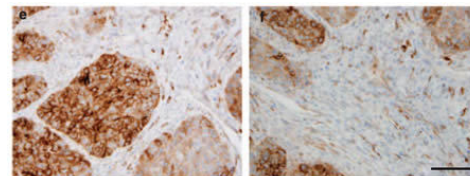
PBS

Uses

Western Blot, Immunoprecipitation, Immunohistochemistry on paraffin-embedded sections and ELISA. For Western blot analysis a band can be seen at 50 kDa. Other bands may be seen at 135 kDa (unprocessed protein) and 37 kDa (fragment of 50 kDa subunit).

ReferencesLemjabbar-Alaoui H, van Zante A, Singer MS, Xue Q, Wang YQ, Tsay D, He B, Jablons DM, Rosen SD. Sulf-2, a heparan sulfate endosulfatase, promotes human lung carcinogenesis. *Oncogene*. 2010 Feb 4;29(5):635-46**Images (more available at www.novusbio.com/NBP1-36727)**

Immunohistochemistry: Sulfatase 2 Antibody (2B4) - Immunohistochemical analysis of Sulfatase 2 in non-small-cell lung carcinoma. e) lung squamous cell carcinoma stained with 2B4 antibody and f) tumor-associated stromal cells stained with 2B4 antibody. Image courtesy of Mark Singer at UCSF.



Updated 2/16/2012 2.0

This product is for research use only and is not approved for use in humans or in clinical diagnosis. Products are guaranteed for six months from the date of receipt except for peptides and proteins which are guaranteed for 3 months. For more information on our guarantee, please visit www.novusbio.com/guarantee.

Novus USA

8100 Southpark Way, A-8
 Littleton, CO 80120
 p) 888-506-6887
 p) 303-730-1950
 f) 303-730-1966
novus@novusbio.com

Novus Canada

461 North Service Road West,
 Unit B37
 Oakville, ON L6M 2V5
 p) 855-668-8722
 f) 905-827-6402
canada@novusbio.com

Novus Europe

12 Cambridge Science Park
 Cambridge, UK CB4 0FQ
 UK: p) +44-1223-426-001, f) +44-871-971-1635
 DE: p) +49-6922-22340-60, f) +49-0800-58926-79
 IT: p) +39-02-4032-6786, f) +39-02-4032-6340
 FR: p) +33-1-76-77-45-30, f) +33-1-76-77-45-31
europe@novusbio.com

