

**NBP1-19344SS****Profilin 1 Antibody****Unit Size**

0.025 ml

**Concentration**

1.37 mg/ml

**Storage**

Store at 4C short term. Aliquot and store at -20C long term. Avoid freeze-thaw cycles.

**Applications**

IHC-P, WB

**Species**

Bovine, Human, Mouse, Rat

**Host**

Rabbit

**Clonality**

Polyclonal

**Purity**

Peptide affinity purified

**Preservative**

0.1% Sodium Azide

**Specificity/Sensitivity**

Profilin

**Immunogen**

Synthetic peptide made to a C-terminal portion of the human protein (within residues 100-140). [Swiss-Prot# P07737]

**Recommended Dilutions**

Western Blot 0.5 ug/ml, Immunohistochemistry-Paraffin 1:100

**Buffer**

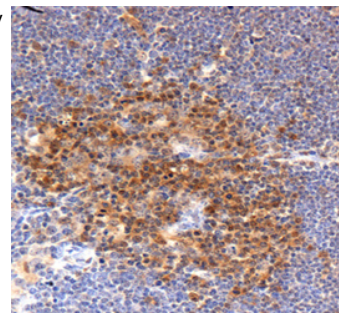
PBS, 30% glycerol

**Uses**

This antibody is useful for Western blot, where a band is seen ~14 kDa. This antibody is also useful for immunohistochemistry-formalin fixed paraffin embedded sections.

**Images** (more available at [www.novusbio.com/NBP1-19344](http://www.novusbio.com/NBP1-19344))

Immunohistochemistry: Profilin 1 Antibody [NBP1-19344] - Immunohistochemical staining of Profilin in mouse thymus.



Updated 2/12/2012 2.0

*This product is for research use only and is not approved for use in humans or in clinical diagnosis. Products are guaranteed for six months from the date of receipt except for peptides and proteins which are guaranteed for 3 months. For more information on our guarantee, please visit [www.novusbio.com/guarantee](http://www.novusbio.com/guarantee).*

**Novus USA**

8100 Southpark Way, A-8  
 Littleton, CO 80120  
 p) 888-506-6887  
 p) 303-730-1950  
 f) 303-730-1966  
[novus@novusbio.com](mailto:novus@novusbio.com)

**Novus Canada**

461 North Service Road West,  
 Unit B37  
 Oakville, ON L6M 2V5  
 p) 855-668-8722  
 f) 905-827-6402  
[canada@novusbio.com](mailto:canada@novusbio.com)

**Novus Europe**

12 Cambridge Science Park  
 Cambridge, UK CB4 0FQ  
 UK: p) +44-1223-426-001, f) +44-871-971-1635  
 DE: p) +49-6922-22340-60, f) +49-0800-58926-79  
 IT: p) +39-02-4032-6786, f) +39-02-4032-6340  
 FR: p) +33-1-76-77-45-30, f) +33-1-76-77-45-31  
[europe@novusbio.com](mailto:europe@novusbio.com)

