

**NBP1-19167SS****LC3 Antibody****Unit Size**

0.025 ml

**Concentration**

0.2 mg/ml

**Storage**

Store at 4C short term. Aliquot and store at -20C long term. Avoid freeze-thaw cycles.

**Applications**

FACS, IHC-P, WB

**Species**

Bovine, Human, Mouse, Rat, Zebrafish

**Theoretical M.W.**

14kDa

**Host**

Rabbit

**Clonality**

Polyclonal

**Purity**

Peptide affinity purified

**Preservative**

0.05% Sodium Azide

**Marker**

Autophagosomes Marker

**Specificity/Sensitivity**

Although specificity between LC3A and LC3B has not been tested, this antibody was created to a peptide that has 100% identity to LC3A and 62% identity to LC3B.

**Immunogen**

Genomic sequence made to a N-terminal portion of the human LC3A protein [Swiss-Prot# Q9H492].

**Recommended Dilutions**

Flow Cytometry 1:100, Immunohistochemistry-Paraffin 1:100, Western Blot 1:2500

**Buffer**

PBS, 0.1% BSA and 50% glycerol

**Uses**

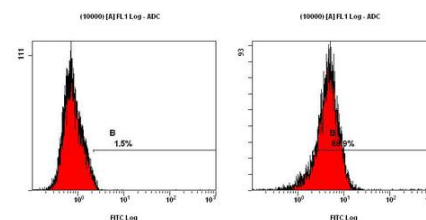
This antibody is useful for immunohistochemistry, and Western blot, where a band is seen ~14 kDa. Immunohistochemistry was done on formalin fixed paraffin embedded sections.

**References**

Mizushima, N., et al. Dissection of autophagosome formation using Apg5- deficient mouse embryonic stem cells. J. Cell Biol. 152:657-668 (2001)

**Images (more available at [www.novusbio.com/NBP1-19167](http://www.novusbio.com/NBP1-19167))**

Flow Cytometry: LC3 Antibody [NBP1-19167] FACS staining of NTERA-2 cells using NBP1-19167 at a 1:50 dilution detected using Dylight-488 conjugated goat anti-rabbit IgG secondary antibody.



Updated 3/8/2012 2.0

This product is for research use only and is not approved for use in humans or in clinical diagnosis. Products are guaranteed for six months from the date of receipt except for peptides and proteins which are guaranteed for 3 months. For more information on our guarantee, please visit [www.novusbio.com/guarantee](http://www.novusbio.com/guarantee).

**Novus USA**

8100 Southpark Way, A-8  
 Littleton, CO 80120  
 p) 888-506-6887  
 p) 303-730-1950  
 f) 303-730-1966  
[novus@novusbio.com](mailto:novus@novusbio.com)

**Novus Canada**

461 North Service Road West,  
 Unit B37  
 Oakville, ON L6M 2V5  
 p) 855-668-8722  
 f) 905-827-6402  
[canada@novusbio.com](mailto:canada@novusbio.com)

**Novus Europe**

12 Cambridge Science Park  
 Cambridge, UK CB4 0FQ  
 UK: p) +44-1223-426-001, f) +44-871-971-1635  
 DE: p) +49-6922-22340-60, f) +49-0800-58926-79  
 IT: p) +39-02-4032-6786, f) +39-02-4032-6340  
 FR: p) +33-1-76-77-45-30, f) +33-1-76-77-45-31  
[europe@novusbio.com](mailto:europe@novusbio.com)

