

NBP1-19167**LC3 Antibody****Unit Size**

0.1 ml

Concentration

0.2 mg/ml

Storage

Store at 4C short term. Aliquot and store at -20C long term. Avoid freeze-thaw cycles.

Applications

FACS, IHC-P, WB

Species

Bovine, Human, Mouse, Rat, Zebrafish

Theoretical M.W.

14kDa

Host

Rabbit

Clonality

Polyclonal

Purity

Peptide affinity purified

Preservative

0.05% Sodium Azide

Marker

Autophagosomes Marker

Updated 3/8/2012 2.0

Specificity/Sensitivity

Although specificity between LC3A and LC3B has not been tested, this antibody was created to a peptide that has 100% identity to LC3A and 62% identity to LC3B.

Immunogen

Genomic sequence made to a N-terminal portion of the human LC3A protein [Swiss-Prot# Q9H492].

Recommended Dilutions

Flow Cytometry 1:100, Immunohistochemistry-Paraffin 1:100, Western Blot 1:2500

Buffer

PBS, 0.1% BSA and 50% glycerol

Uses

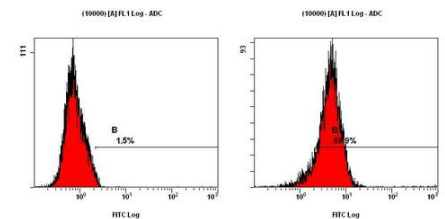
This antibody is useful for immunohistochemistry, and Western blot, where a band is seen ~14 kDa. Immunohistochemistry was done on formalin fixed paraffin embedded sections.

References

Mizushima, N., et al. Dissection of autophagosome formation using Apg5- deficient mouse embryonic stem cells. J. Cell Biol. 152:657-668 (2001)

Images (more available at www.novusbio.com/NBP1-19167)

Flow Cytometry: LC3 Antibody [NBP1-19167] FACS staining of NTERA-2 cells using NBP1-19167 at a 1:50 dilution detected using Dylight-488 conjugated goat anti-rabbit IgG secondary antibody.



This product is for research use only and is not approved for use in humans or in clinical diagnosis. Products are guaranteed for six months from the date of receipt except for peptides and proteins which are guaranteed for 3 months. For more information on our guarantee, please visit www.novusbio.com/guarantee.

Novus USA
 8100 Southpark Way, A-8
 Littleton, CO 80120
 p) 888-506-6887
 p) 303-730-1950
 f) 303-730-1966
novus@novusbio.com
Novus Canada
 461 North Service Road West,
 Unit B37
 Oakville, ON L6M 2V5
 p) 855-668-8722
 f) 905-827-6402
canada@novusbio.com
Novus Europe
 12 Cambridge Science Park
 Cambridge, UK CB4 0FQ
 UK: p) +44-1223-426-001, f) +44-871-971-1635
 DE: p) +49-6922-22340-60, f) +49-0800-58926-79
 IT: p) +39-02-4032-6786, f) +39-02-4032-6340
 FR: p) +33-1-76-77-45-30, f) +33-1-76-77-45-31
europe@novusbio.com
