

NB500-249**Beclin 1 Antibody****Unit Size**

0.1 ml

Concentration

1.0 mg/ml

Storage

Store at 4C. Do not freeze.

Applications

ICC, IF, IHC, IHC-P, IP, WB

Species

Human, Mouse

Host

Rabbit

Clonality

Polyclonal

Purity

Immunogen affinity purified

Preservative

0.1% Sodium Azide

Specificity/Sensitivity

This is specific to Beclin 1.

Immunogen

NB 500-249 was raised against an internal synthetic peptide to human Beclin 1, containing residues within 1-100. This sequence has 94% identity with the mouse sequence and 88% identity with the rat sequence.

Recommended Dilutions

Immunocytochemistry 1:50-1:200, Immunofluorescence 1:50-1:200, Immunohistochemistry, Immunohistochemistry-Paraffin, immunoprecipitation, Western Blot

Buffer

Tris-citrate/phosphate, pH 7-8

Uses

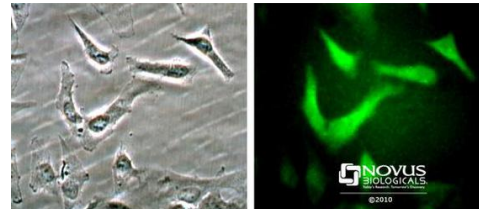
Western blot, Immunoprecipitation, Immunocytochemistry and most histochemical applications. Western blot a band is seen at ~52 kDa representing Beclin 1.

References (more available at www.novusbio.com/NB500-249)

Cheng H-C, Kim SR, Oo TF, et al. Akt suppresses retrograde degeneration of dopaminergic axons by inhibition of macroautophagy. J. Neurosci. 2011 Feb 9. [PMID: 21307249]

Images (more available at www.novusbio.com/NB500-249)

Immunocytochemistry: Beclin 1 Antibody [NB500-249] - Beclin 1 staining in Hela cells detected with a Dylight 488 labeled secondary antibody using NB500-249.



Updated 2/16/2012 2.0

This product is for research use only and is not approved for use in humans or in clinical diagnosis. Products are guaranteed for six months from the date of receipt except for peptides and proteins which are guaranteed for 3 months. For more information on our guarantee, please visit www.novusbio.com/guarantee.

Novus USA

8100 Southpark Way, A-8
 Littleton, CO 80120
 p) 888-506-6887
 p) 303-730-1950
 f) 303-730-1966
novus@novusbio.com

Novus Canada

461 North Service Road West,
 Unit B37
 Oakville, ON L6M 2V5
 p) 855-668-8722
 f) 905-827-6402
canada@novusbio.com

Novus Europe

12 Cambridge Science Park
 Cambridge, UK CB4 0FQ
 UK: p) +44-1223-426-001, f) +44-871-971-1635
 DE: p) +49-6922-22340-60, f) +49-0800-58926-79
 IT: p) +39-02-4032-6786, f) +39-02-4032-6340
 FR: p) +33-1-76-77-45-30, f) +33-1-76-77-45-31
europe@novusbio.com

