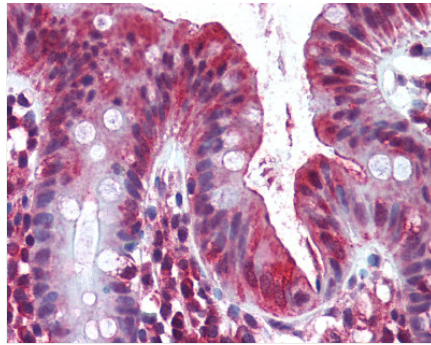


**Olfactomedin 4 (OLFM4/GW112) Rabbit anti-Human Polyclonal Antibody - LS-B2055 - LifeSpan BioSciences**

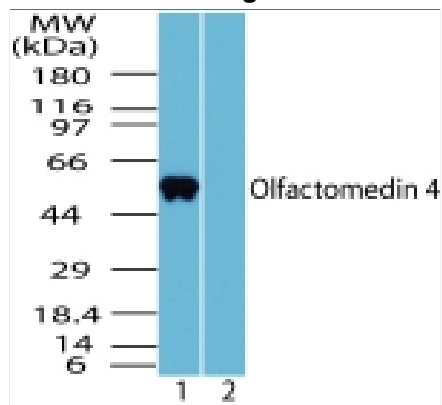
<b>CatalogID:</b>	LS-B2055
<b>Validation:</b>	This antibody replaces catalog number LS-C47338. It has been validated for use in the following assays: IHC-P.
<b>Target:</b>	Olfactomedin 4 (OLFM4/GW112)
<b>Synonyms:</b>	OLFM4, GW112, hCG-1, olfactomedin 4
<b>Family / Subfamily:</b>	Olfactomedin / not assigned-Olfactomedin
<b>Host:</b>	OLFM4 antibody was produced in Rabbit
<b>Clonality:</b>	Polyclonal
<b>Antigen Species:</b>	OLFM4 antibody was raised against Human
<b>Antigen Type:</b>	Synthetic peptide - KLH conjugated
<b>Immunogen:</b>	OLFM4 antibody was raised against synthetic peptide
<b>Specificity:</b>	A portion of amino acids 400-450 of human Olfactomedin 4
<b>Predicted Species Reactivity:</b>	Bovine, Chimpanzee, Dog, Monkey, Mouse, Rat
<b>Purification:</b>	Immunoaffinity Chromatography
<b>Size:</b>	50 µg
<b>Concentration:</b>	0.5 mg/ml
<b>Presentation:</b>	PBS, 0.05% BSA, 0.05% sodium azide.
<b>Recommended Storage:</b>	Long term: -20°C; Short term: +4°C
<b>Uses:</b>	Immunohistochemistry - Paraffin (IHC-P) (5 µg/ml ), Western blot (WB) (0.5 - 2 µg/ml ) (Optimal dilution to be determined by the researcher)

**Immunohistochemistry Image:**



Colon: Formalin-Fixed Paraffin-Embedded (FFPE)

**Western Blot Image:**



Western blot analysis of human Olfactomedin 4 in human liver lysate in the 1) absence and 2) presence of immunizing peptide using LS-B2055 at 2 ug/ml.

Laboratory Reagent For In Vitro Research Use Only

Created on 4/8/2010

© 2010 LifeSpan BioSciences