



11175 Flintkote Ave., Suite E, San Diego, CA 92121
Tel: (858) 642-0978 Fax (858) 642-0937
Toll free: 1-888-723-GENE
E-mail: info@imgenex.com
web site: <http://www.imgenex.com>

Monoclonal Antibody to SSEA-4 (Stage-Specific Embryonic Antigen-4) (Clone MC-813-70) Alexa Fluor® 647 Conjugate

Catalog No : IMG-6524AF647-25
Formulation : 25 tests in 250 ul PBS containing 0.05% BSA and 0.05% sodium azide. Sodium azide is highly toxic.
Isotype : Mouse IgG3, Kappa
Clone : MC-813-70
Purification : Protein G Chromatography
Species React : Human
Host : Mouse

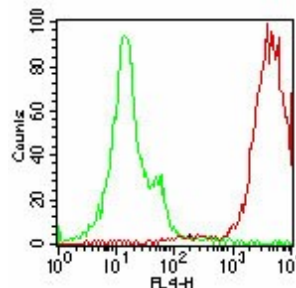
Application
Flow (Cell Surface): 10 ul/10⁶ cells (0.5 ug)
IF/ICC: reported in literature
Storage
Store at 4 °C, stable for 6 months. DO NOT FREEZE;
MATERIAL IS LIGHT-SENSITIVE.

Background

SSEA-4 specific antibody, clone MC-813, is reactive with Stage-Specific Embryonic Antigen-4, a carbohydrate antigen expressed on human teratocarcinoma cells (EC), embryonic stem cells (ES) and embryonic germ cells. It is also expressed on a subset of mesenchymal stem cells, erythrocytes, the erythroleukemic myeloid cell line K562, unfertilized oocytes and early cleaved stage oocytes.

Antigen

Human embryonal carcinoma cell line 2102Ep



Cell surface flow cytometric analysis of SSEA-4 on human 2102Ep cells using 10 ul/10⁶ cells of IMG-6524AF647-25 (green histogram represents isotype control; red represents SSEA-4 antibody). IMGENEX s cell surface flow kit (10084K) was used for this test (cells were not fixed for testing).

Reference

1. Müller T, et al. Hum Reprod. 2009 Feb 27 (2009)
2. Henderson, J.K., et al. Stem Cells. 20: 329 (2002)
3. Gang E.J. et al. Blood. Feb 15;109(4):1743-51 (2007)
4. Kannagi, R., et al., EMBO J. 2: 2355 (1983)

Copyright © IMGENEX Corporation. All Rights Reserved

Toll free: 1-888-723-4363

Fax: 1-858-642-0937

www.imgenex.com

info@imgenex.com

Research purposes only. Not for diagnostic or in vivo use.