

Monoclonal Antibody to SSEA-4 (Stage-Specific Embryonic Antigen-4) (Clone MC-813-70)



11175 Flintkote Ave., Suite E, San Diego, CA 92121
Tel: (858) 642-0978 Fax (858) 642-0937
Toll free: 1-888-723-GENE
E-mail: info@imgenex.com
web site: <http://www.imgenex.com>

Monoclonal Antibody to SSEA-4 (Stage-Specific Embryonic Antigen-4) (Clone MC-813-70)

Catalog No : IMG-6524A-25
Formulation : 25 ug in 50 ul PBS containing 0.05% BSA and 0.05% sodium azide. Sodium azide is highly toxic.
Isotype : Mouse IgG3, Kappa
Clone : MC-813-70
Purification : Protein G Chromatography
Species React : Human
Host : Mouse

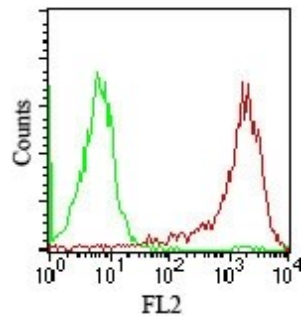
Application
Flow (Cell Surface): 0.1 ug/10⁶ cells
IHC (paraffin): reported in literature
IP: reported in literature
Western blot analysis: reported in literature
Storage
Store at 4°C, stable for 6 months. For long-term storage, aliquot and store at -20°C.

Background

SSEA-4 specific antibody, clone MC-813, is reactive with Stage-Specific Embryonic Antigen-4, a carbohydrate antigen expressed on human teratocarcinoma cells (EC), embryonic stem cells (ES) and embryonic germ cells. It is also expressed on a subset of mesenchymal stem cells, erythrocytes, the erythroleukemic myeloid cell line K562, unfertilized oocytes and early cleaved stage oocytes.

Antigen

Human embryonal carcinoma cell line 2102Ep



Cell surface flow cytometric analysis of SSEA-4 on 2102Ep cells using 0.1 ug/10⁶ cells of IMG-6524A-25 (green histogram represents isotype control; red represents SSEA-4 antibody).

Reference

1. Kannagi, R., et al., EMBO J. 2: 2355 (1983)
2. Gang E.J. et al. Blood. Feb 15;109(4):1743-51 (2007)
3. Henderson, J.K., et al. Stem Cells. 20: 329 (2002)
4. Müller T, et al. Hum Reprod. 2009 Feb 27 (2009)

Copyright © IMGENEX Corporation. All Rights Reserved

Toll free: 1-888-723-4363

Fax: 1-858-642-0937

www.imgenex.com

info@imgenex.com

Research purposes only. Not for diagnostic or in vivo use.