

## Polyclonal Antibody to TLR1



11175 Flintkote Ave., Suite E, San Diego, CA 92121  
Tel: (858) 642-0978 Fax (858) 642-0937  
Toll free: 1-888-723-GENE  
E-mail: [info@imgenex.com](mailto:info@imgenex.com)  
web site: <http://www.imgenex.com>

## Polyclonal Antibody to TLR1

**Catalog No :** IMG-5012  
**Formulation :** 0.1 mg in 0.2 ml PBS containing 0.05% BSA and 0.05% sodium azide. Sodium azide is highly toxic.  
**Isotype :** Rabbit IgG  
**Purification :** Protein G Chromatography  
**Species React :** Human, Mouse, Rat  
**Host :** Rabbit

**Application**  
Western blot analysis: 1-3 ug/ml  
Flow (Intracellular): 0.5-1 ug/10<sup>6</sup> cells  
Flow (Cell Surface): 0.5-1 ug/10<sup>6</sup> cells, or see Wong et al, 2007  
**Storage**  
Store at 4°C, stable for 6 months. For long-term storage, store at -20°C.

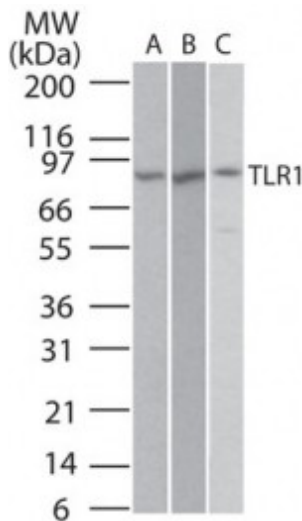
### Background

The Toll-like receptor (TLR) family in mammals are comprised of a family of transmembrane proteins characterized by multiple copies of leucine rich repeats in the extracellular domain and an IL-1 receptor motif in the cytoplasmic domain. The TLRs could constitute an important and unrecognized component of innate immunity in humans. In mice, TLR1 interacts with TLR2 and coexpression of TLR1 and TLR2 enhance the NF-kappaB activation in response to a synthetic lipopeptide. They recognize the lipid configuration of the native mycobacterial lipoprotein as well as several triacylated lipopeptides.

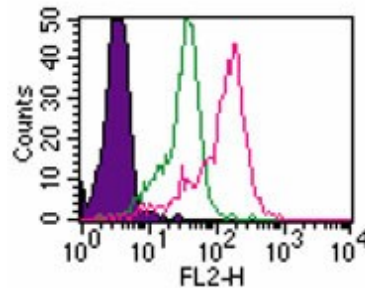
### Antigen

This antibody was developed against a KLH-conjugated synthetic peptide corresponding to a sequence within amino acids 400-450 of human TLR1.

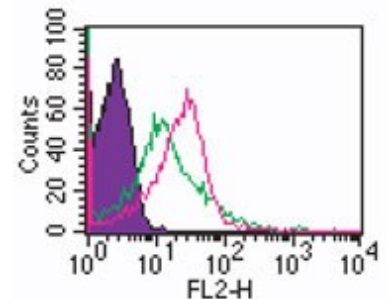
**Genebank Info (Protein)**  
NP\_003254



Western blot analysis of TLR1 in Ramos (A), Raw (B), and (C) TLR1 transfected cell lysate (IMGENEX, 40213) using IMG-5012 at 2 ug/ml. Imgenex's goat anti-rabbit HRP secondary antibody (IMGENEX, 20301) was used.



Intracellular flow cytometric analysis of TLR1 in human PBMCs (monocyte-gated) using IMG-5012 at 0.5 ug/10<sup>6</sup> cells. Shaded histogram represents cells without antibody, green represents isotype control (IMGENEX, 20304), red represents TLR1 antibody. IMGENEX's goat anti-rabbit PE secondary antibody (IMGENEX, 20303) was used.



Cell surface flow cytometric analysis of TLR1 in human PBMCs (monocyte-gated) using IMG-5012 at 0.5 ug/10<sup>6</sup> cells. Shaded histogram represents cells without antibody, green represents isotype control (IMGENEX, 20304), red represents TLR1 antibody. IMGENEX's goat anti-rabbit PE secondary antibody (IMGENEX, 20303) was used.

### Related Products

- 20301 [Goat Anti-Rabbit HRP Conjugate]
- 20302 [Goat Anti-Rabbit IgG (H+L)-FITC Conjugate]
- 20303 [Goat Anti-Rabbit IgG (H+L) PE conjugated secondary antibody ]
- 40175 [Ramos cell line lysate (human Lymphoblast, Burkitt's lymphoma)]
- IMG-2201 [Pam3CSK4, TLR1 and TLR2 Ligand]

### Reference

- Takeuchi O, et al. J Immunol. 169(1):10-14 (2002)
- Wyllie, D.H., et al. J Immunol. 165: 7125 (2000).

## Polyclonal Antibody to TLR1

3. Visintin, A., et al. *J. Immunol.* 166: 249 (2001).
4. Liu S, et al. *Infect Immun* 70(7):3433-42 (2002)

### Product Citations

- 1. Members of the Toll-like Receptor Family of Innate Immunity Pattern-Recognition Receptors Are Abundant in the Male Rat Reproductive Tract.** Palladino MA., TA Johnson, R Gupta, JL Chapman, and P Ojha. *Biol Reproduction.*, in press, DOI: 10.1095/biolreprod.106.059410 (2007). **IMGENEX antibodies cited: The following antibodies were used for WB in Fig. 2 using rat, testis, epididymis, and vas deferens: TLR 1 (IMG-5012), TLR2 (IMG-545), TLR5 (IMG-580), TLR6 (IMG-527), TLR7 (IMG-581) TLR9 (IMG-305A), TLR10 (IMG-5255A), TLR11 (IMG-5034) and MYD88 (IMG-178).**
- 2. Intracellular Signaling Mechanisms Regulating Toll-Like Receptor-Mediated Activation of Eosinophils.** Wong CK, PFY Cheung, WK IP and CWK Lam. *Am. J. Respir. Cell Mol. Biol.*doi:10.1165/rcmb.2006-0457OC (2007), in press. **IMGENEX antibodies cited (human blood eosinophils and neutrophils from buffy coat): For WB, Fig. 1A: TLR1 (IMG-5012), TLR5 (IMG-664), TLR6 (IMG-304A), TLR7 (IMG-540), TLR8 (IMG-321A), TLR9 (IMG-305A). For Flow (Intracellular) and Flow (Surface), Fig. 1B: TLR1 (IMG-5021), TLR2 (IMG-416C), TLR3 (IMG-315C), TLR4 (IMG-417C), TLR5 (IMG-663C), TLR6 (IMG-304C), TLR7 (IMG-665A), TLR8 (IMG-321C), TLR9 (IMG-305C).**

Copyright © IMGENEX Corporation. All Rights Reserved

Toll free: 1-888-723-4363

Fax: 1-858-642-0937

[www.imgenex.com](http://www.imgenex.com)

[info@imgenex.com](mailto:info@imgenex.com)

Research purposes only. Not for diagnostic or in vivo use.