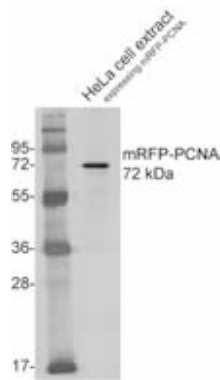
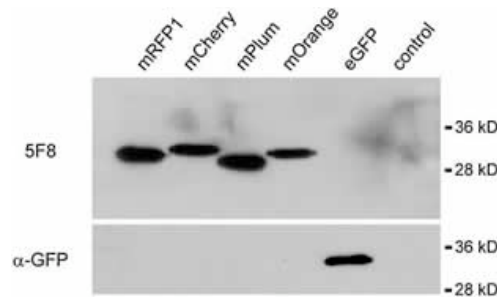


RFP antibody [5F8]

Description	Rat monoclonal [5F8] to Multiple Red Fluorescent Proteins. For biochemical and cell biological analysis of RFP-tagged fusion proteins.
Product Type	Primary antibody
Specificity	5F8 recognizes various Red fluorescent proteins derived from DsRed and RFP-tagged fusion proteins.
Isotype	IgG2a
Relevance	<p>Fluorescent proteins (FP) are powerful tools to study protein localization and dynamics in living cells. In addition to the prominent green fluorescent protein (GFP) from <i>Aequorea victoria</i>, a red fluorescent protein (DsRed) was discovered in the coral <i>Discosoma</i> sp. Mutagenesis of the red progenitor has resulted in several monomeric red FPs (mRFP1, mCherry, mOrange, mPlum, etc) which become attractive tools for a number of applications. For example the combination of green and red fusion proteins allows multicolor tracking as well as protein-protein interaction studies in living cells.</p> <p>Here we offer a rat monoclonal antibody (MAb) against multiple red FPs, designated as multi-red 5F8. The 5F8 MAb is characterized by high affinity and specificity against the DsRed derivatives and corresponding fusion proteins. It is suitable for ELISA, immunoblotting, immunoprecipitation, and immunofluorescence assays.</p> <p>With this versatile antibody red fluorescent proteins and fusions thereof become attractive tools for biochemical applications like identification of interacting proteins or enzymatic analyses as well as for microscopic analyses.</p>
Reference	Rottach, A <i>et al.</i> Generation and characterization of a rat monoclonal antibody specific for multiple red fluorescent proteins. <i>Hybridoma</i> (2008). PubMed: 18788935
Form	Liquid; hybridoma supernatant. The hybridoma was cultured in protein free medium. Tissue culture supernatant was concentrated by centrifugation using a 30 kD exclusion membrane to an antibody concentration of 1 mg/ml.
Size	100 µg
Storage Buffer	Preservative: 0.01% Sodium Azide Material safety datasheet (MSDS) for this product: Sodium Azide MSDS
Concentration	1 mg/ml
Storage instructions	Upon delivery aliquot and store at -20°C. Store at +4°C short term (1-2 weeks). Avoid freeze / thaw cycles.

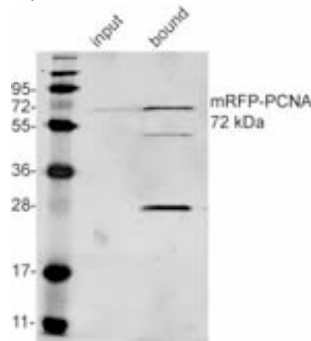
Tested Applications and Recommended Dilutions

Western Blot: Used at a dilution of 1/1000. Detects a band of approximately 30 kDa (predicted molecular weight RFP: 30 kDa).



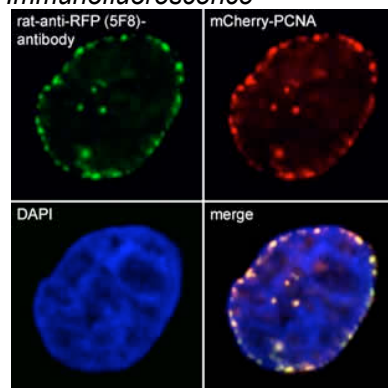
primary antibody: 0.2 µg of multi-red antibody 5F8
incubation for 1 h at RT
secondary antibody: anti-rat-HRP (Jackson ImmunoResearch Europe)
detection with ECL Western Blot Detection Kit

IP, Co-IP



For immunoprecipitation 4µg of multi-red antibody 5F8 used incubation for 1 h at RT
A 50 kDa band is precipitated which is IgG heavy chain whilst the 30kDa band is PCNA.

Immunofluorescence



HeLa cells stably expressing mCherry-PCNA, 3,7% PFA fixed. Used at a dilution of 1/1000. Secondary antibody: donkey-anti-rat-Alexa488 (1/400)

Not yet tested in other applications. Optimal dilutions/concentrations should be determined by the end user.

Only for research applications, not for diagnostic or therapeutic use.