

PPP1CA IHC Antibody

Affinity Purified

Recommended for Immunohistochemistry-FFPE

Produced in Rabbit

Catalog No.

IHC-00483



Storage: 2-8° C

Amount: 0.1 ml

Buffer: Tris-buffered Saline containing 0.1% BSA with 0.09% Sodium Azide

Shelf Life: 1 year from date of receipt

Production Procedures: Antibody was affinity purified using an epitope specific to PPP1CA immobilized on solid support.

The epitope recognized by IHC-00483 maps to a region between residue 280 and the C-terminus (residue 330) of human Protein Phosphatase 1, Catalytic Subunit, Alpha Isoform using the numbering given in entry NP_002699.1 (GeneID 5499).

Immunoglobulin concentration was determined by extinction coefficient: absorbance at 280 nm of 1.4 equals 1.0 mg of IgG.

Alternate Names: PPP1A, PP-1A, PPP1CA, Protein Phosphatase 1, Catalytic Subunit, Alpha Isoform.

Country of Origin: USA

Notes: Centrifuge microtube to remove product from lid.

For In vitro laboratory use only. Not for any clinical, therapeutic, or diagnostic use in humans or animals. Not for animal or human consumption.

This product may not be resold or modified for resale without the prior written approval of Bethyl Laboratories, Inc.

Related Products:	Goat anti-Rabbit IgG-heavy and light chain Antibody Biotinylated	A120-101B
	Goat anti-Rabbit IgG-heavy & light highly cross-adsorbed Antibody Hilyte Plus™ 555	A120-501E
	Goat anti-Rabbit IgG-heavy & light highly cross-adsorbed Antibody FITC Conjugated	A120-501F
	Goat anti-Rabbit IgG-heavy and light highly cross-adsorbed Antibody HRP Conjugated	A120-501P
	Immunohistochemistry Accessory Kit	IHC-101
	Epitope Retrieval Buffer Concentrate-Reduced pH	IHC-101A
	Ready-To-Use IHC Blocking Reagent	IHC-101B
	Ready-To-Use IHC Antibody Diluent	IHC-101C
	anti-Rabbit IHC Antibody Concentrate	IHC-101D
	IHC Wash Solution Concentrate	IHC-101E
	DAB Substrate	IHC-101F
	Ready-To-Use IHC Hematoxylin	IHC-101G
	Ready-To-Use IHC Bluing Reagent	IHC-101H
	Epitope Retrieval Buffer Concentrate-High pH	IHC-101J
	Normal Goat Serum	IHC-GS100
	Normal Goat Serum	IHC-GS250
	Normal Goat Serum	IHC-GS50

Catalog No.

IHC-00483

Reactivity: Human. Other species have not been tested.

Human Controls: Breast Carcinoma, Ovarian Carcinoma, Testicular Seminoma

Applications: Optimal working dilutions should be determined experimentally by the investigator.
Suggested starting dilutions are as follows:

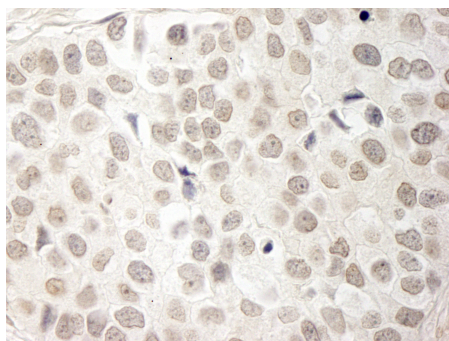
Formalin-Fixed Paraffin-Embedded Tissue 1:100 - 1:500

Epitope exposure is recommended.

Epitope exposure with tris-EDTA pH9.0 buffer will enhance staining.

Likely to work with frozen sections

In some cases, the antibody may be diluted further than indicated.



Detection of Human PPP1CA by Immunohistochemistry.

Sample: FFPE section of human breast carcinoma. *Antibody:* Affinity purified rabbit anti-PPP1CA (Cat. No. IHC-00483) used at a dilution of 1:250. *Detection:* DAB staining using Immunohistochemistry Accessory Kit (Cat. No. IHC-101). Epitope Retrieval Buffer-High pH (IHC-101J) was substituted for Epitope Retrieval Buffer-Reduced pH.

Catalog No.

IHC-00483

MATERIAL SAFETY DATA SHEET

Contents Description

This product contains Rabbit immunoglobulin G (IgG) protein in Tris-buffered Saline containing 0.1% BSA with 0.09% Sodium Azide.

Hazardous Ingredients

Rabbit IgG Protein - No known toxicity for this biological material.

Bovine Serum Albumin (BSA) - No known toxicity for this biological material.

Sodium Azide (NaN_3) - AZIDE FORMS EXPLOSIVE CHEMICAL COMPOUNDS WITH LEAD AND COPPER PLUMBING. CARE MUST BE TAKEN TO WASH WASTE DOWN DRAINS WITH LARGE VOLUMES OF WATER.

LD50 oral mouse - 27 mg/kg.

Wash all affected areas with large volumes of water and if swallowed consult your physician immediately.

The above information is believed to be correct but does not purport to be all-inclusive and is intended to be used only as a guide. Bethyl Laboratories, Inc. shall not be liable or responsible in any way for use of either this information or the material supplied. Disposal of hazardous material may be subject to federal, state, or local laws or regulations.